



**DOWNLOAD THE LATEST
INSTALL MANUALS AT
www.bddiesel.com**



FORD HIGH IDLE KIT

1036612

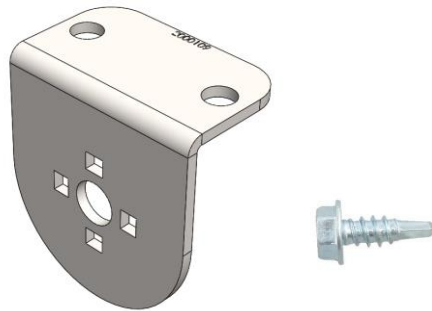
2017-2019 Ford F250/F350/F450/F550
6.7L Diesel

PLEASE READ ALL INSTRUCTIONS BEFORE INSTALLATION

Tools Required

- 1/16" Allen Key
- 1/8" and 9/32" Drill Bit (optional)

Included Accessories



2000109 - Switch Bracket x1
1330052 - Bracket Screws x2

This switch bracket may be used to mount the high idle switch below the dashboard instead of drilling through the plastic dash panels.

High Idle Kit Information

This high idle kit allows the user to control the engine RPM while stationary by interfacing with the SEIC wiring found in Ford Power Stroke diesel trucks. This wiring harness comes with a plug in connector for quick connection to the factory wiring.

The operator may idle the engine anywhere between 900-3000RPM.

This kit is great for faster warm-ups, extended idling, maintaining battery voltage under high electrical demands or running power take-off equipment such as hydraulic pumps, compressors and generators.

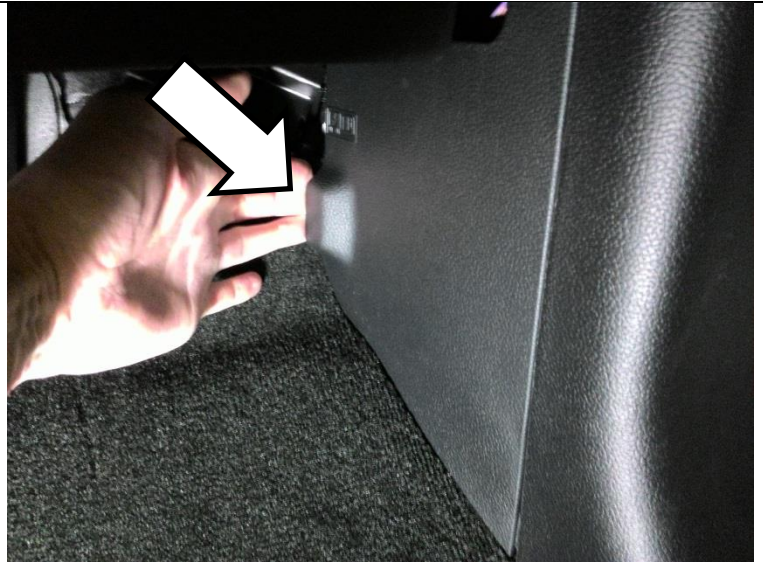
NOTE This kit is not applicable to the gasoline 6.2L and 6.8L engines without first changing the pinout of the BD wiring harness connector.

Installation Instructions

1. Locate the fuse box behind the passenger side kick panel (below the glove box).



2. Pull off the access panel cover as shown.



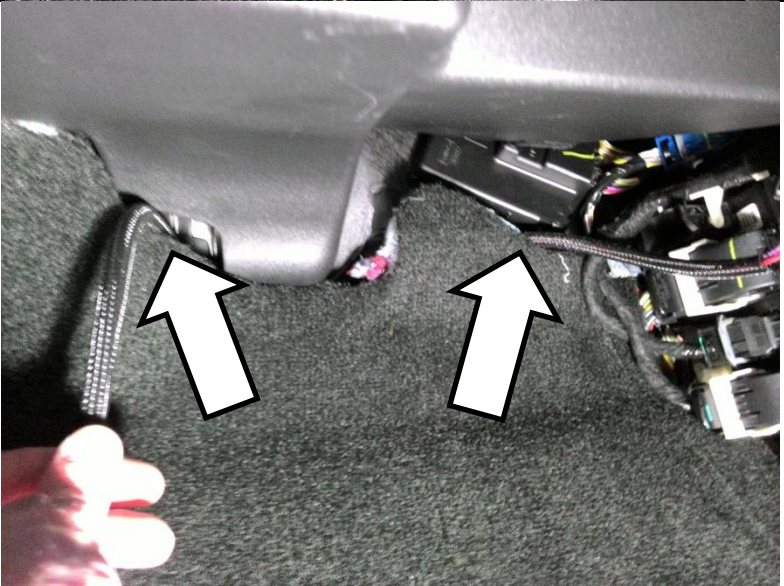
3. Locate and disconnect the OEM up-fitter wire pigtail. This pigtail will not be used so it may be left in the glove box or tucked back in the fuse box area.



4. Plug in the BD High Idle wiring harness to this connector.



5. Tuck the wire from the BD High Idle kit behind the carpet/under the dash towards the driver side of the cab. You can remove the lower center console trim to make this easier. Wire may be secured with supplied zip ties.



6. Locate a spot to mount the switch. Suggested location shown but this is left to the customer's preference.



BD Engine Brake Inc.

Plant Address: 33541 MacLure Rd. Abbotsford, BC, Canada V2S 7W2

U.S. Shipping Address: 88-446 Harrison St, Sumas, WA 98295 U.S. Mailing Address: P.O. Box 231, Sumas, WA 98295

Phone: 604-853-6096 | Fax: 604-853-8749 | Internet: www.bd-power.com

7. If mounting in the knee bolster, be aware of the reinforcement plate behind the bolster which will limit the available spaces to mount the switch.



8. Drill a 9/32" hole in the dashboard to mount the switch. Beside the first hole, drill a 1/8" hole for the locator tab of the switch. Use the switch as a guide for location. Apply the switch decal to the dash and insert the switch through the dashboard. Install retainer nut. Install the knob on the switch using a 1/16" Allen key.



Operation

With the engine running, parking brake applied and transmission in park, turn the control knob clockwise until a click is heard. The high idle control is now turned on and the desired engine RPM can be selected by rotating the knob. The adjustment range is 900-3000 RPM.

If the transmission is shifted out of park, the brake is pressed, parking brake released, throttle pressed or road speed is detected the high idle will be disabled for safety. Turn the high idle off and back on to restart it.

Note. The high idle feature will be disabled until the engine oil and transmission fluid are at least 20°F (-6°C). This is to protect the engine against damage from over revving with cold engine oil. Most emission monitors will also be disabled when in high idle mode. See disablers section below.

BD Engine Brake Inc.

Plant Address: 33541 MacLure Rd. Abbotsford, BC, Canada V2S 7W2

U.S. Shipping Address: 88-446 Harrison St, Sumas, WA 98295 U.S. Mailing Address: P.O. Box 231, Sumas, WA 98295

Phone: 604-853-6096 | Fax: 604-853-8749 | Internet: www.bd-power.com

Disablers for the 6.7L High Idle

Vehicle Conditions to Enable SEIC	Vehicle Conditions that Disable SEIC
Parking brake applied	Parking brake disengaged
Foot off service brake	Depressing service brake
Vehicle in PARK	Vehicle taken out of PARK
Foot off accelerator pedal	Accelerator pedal depressed
Vehicle speed is 0mph	Vehicle speed is not 0mph
Engine at a stable base idle speed	
Transmission oil temp above 20 F	Transmission oil temp exceeds 240 F
Engine coolant temp above 20 F	Engine coolant temp exceeds 234 F
	Catalyst temperature limit

BD Engine Brake Inc.

Plant Address: 33541 MacLure Rd. Abbotsford, BC, Canada V2S 7W2

U.S. Shipping Address: 88-446 Harrison St, Sumas, WA 98295 U.S. Mailing Address: P.O. Box 231, Sumas, WA 98295

Phone: 604-853-6096 | Fax: 604-853-8749 | Internet: www.bd-power.com