

INSTALLATION INSTRUCTION

1½" PRESSURE GAUGES



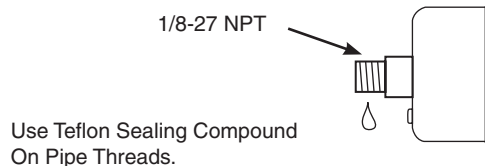
Preliminary Steps

1. Read instructions thoroughly. Please consult a qualified mechanic if you have not had training in the proper installation of instruments.
2. Determine ideal mounting location. Consult your vehicle's repair manual to locate:
 - A) Fuel Pressure Port
 - B) Oil Pressure Port
 - C) Any other Pressure port

CAUTION: Some late model vehicles use electronic sensors in their pressure and temperature senders for engine control functions. Before removing the original senders, we recommend that you contact your Auto Dealer to be sure no critical functions will be disrupted. With pressure gauges, it is beneficial to add a T-fitting to install your new gauge and to keep the warning light operational. This allows you to monitor the pressure and still have a warning light to indicate emergency conditions.

INSTALLATION

1. Locate pressure port. This gauge is designed for 1/8" NPT. In some cases an adapter may be necessary.
2. Install T-fitting if needed to share test port with additional gauge(s).
3. Ensure the regulator is mounted with the gauge face vertical, at the right angles to the ground, with the Vent Valve at the top.
4. Apply Teflon sealing compound to insure a leak-free connection.
5. Install gauge into pressure port, being careful not to over tighten.
6. After installation, start engine and check all connections for leaks.



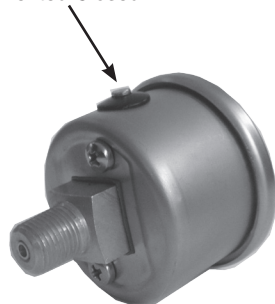
OPERATION

Your gauge may be equipped with an external vent valve for the purpose of venting the gauge. Changes in temperature and environmental pressure can affect how a liquid filled gauge reports pressure. Your new Auto Meter liquid filled gauge may be equipped with a unique vent valve that allows gauge pressure to be equalized to atmosphere, as needed, insuring accurate pressure readings regardless of operating conditions.

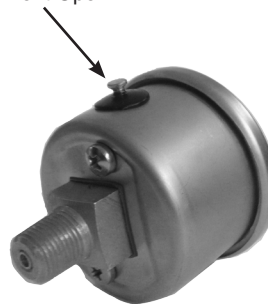
To vent the gauge case push the black band back covering the vent valve head and gently lift it up slightly, **DO NOT REMOVE THE VALVE.** Once the valve is raised, gauge case pressure is again equalized to atmosphere, and reported pressure will be accurate. Please push the stem back down and replace the black retaining band immediately after equalizing pressure to reseal the gauge and help retain the valve during vehicle operation.

NOTE: *The gauge must be mounted with the gauge face vertically, (or as close to 90° to the ground as possible) with the vent on top. This is to prevent the gauge from leaking during venting.*

Vented Closed



Vent Open



NOTE: This liquid filled gauge is not intended to be 100% full of liquid. When held vertical, the level can appear to be between 3/4 and 7/8 full.

SERVICE

For service send your product to Auto Meter in a well packed shipping carton. Please include a note explaining what the problem is along with your phone number. If you are sending product back for Warranty adjustment, you must include a copy (or original) of your sales receipt from the place of purchase.

12 MONTH LIMITED WARRANTY

AUTO METER Products, Inc. warrants to the consumer that all AUTO METER High Performance products purchased from an Authorized AUTO METER Reseller will be free from defects in material and workmanship for a period of twelve (12) months from date of the original purchase. Products that fail within this 12 month warranty period will be repaired or replaced at AUTO METER's option, when determined by AUTO METER that the product failed due to defects in material or workmanship. This warranty is limited to the repair or replacement of parts in the AUTO METER High Performance product and the necessary labor done by AUTO METER to effect the repair or replacement of the AUTO METER High Performance product. In no event shall AUTO METER's cost to repair or replace an AUTO METER High Performance Product under this warranty exceed the original purchase price of the AUTO METER High Performance Product. Nor shall AUTO METER Products, Inc. be responsible for special, incidental or consequential damages or costs incurred due to the failure of an AUTO METER High Performance Product. This warranty applies only to the original purchaser of the AUTO METER High Performance Product and is non-transferable. This warranty also applies only to AUTO METER High Performance Products purchased from an Authorized AUTO METER Reseller. All implied warranties shall be limited in duration to the said 12 month warranty period. Breaking the instrument seal, improper use or installation, accident, water damage, abuse, unauthorized repairs or alterations voids this warranty. AUTO METER disclaims any liability for consequential damages due to the breach of any written or implied warranty on all products manufactured by AUTO METER Products, Inc. For a comprehensive listing of Un-Authorized Auto Meter Resellers please visit www.autometer.com/autometerlocator/index/unauthorized.

FOR SERVICE SEND TO: AUTO METER PRODUCTS, INC. 413 W. Elm St., Sycamore, IL 60178 USA (866) 248-6357
Email us at service@autometer.com

INSTALLATION INSTRUCTION

1½" PRESSURE GAUGES



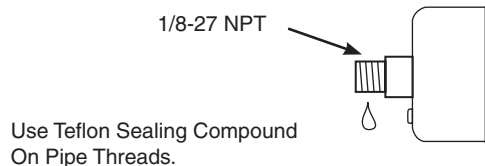
Preliminary Steps

1. Read instructions thoroughly. Please consult a qualified mechanic if you have not had training in the proper installation of instruments.
2. Determine ideal mounting location. Consult your vehicle's repair manual to locate:
 - A) Fuel Pressure Port
 - B) Oil Pressure Port
 - C) Any other Pressure port

CAUTION: Some late model vehicles use electronic sensors in their pressure and temperature senders for engine control functions. Before removing the original senders, we recommend that you contact your Auto Dealer to be sure no critical functions will be disrupted. With pressure gauges, it is beneficial to add a T-fitting to install your new gauge and to keep the warning light operational. This allows you to monitor the pressure and still have a warning light to indicate emergency conditions.

INSTALLATION

1. Locate pressure port. This gauge is designed for 1/8" NPT. In some cases an adapter may be necessary.
2. Install T-fitting if needed to share test port with additional gauge(s).
3. Ensure the regulator is mounted with the gauge face vertical, at the right angles to the ground, with the Vent Valve at the top.
4. Apply Teflon sealing compound to insure a leak-free connection.
5. Install gauge into pressure port, being careful not to over tighten.
6. After installation, start engine and check all connections for leaks.



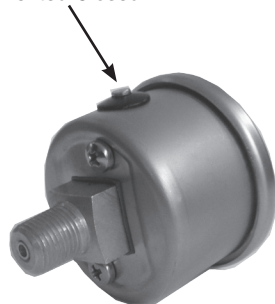
OPERATION

Your gauge may be equipped with an external vent valve for the purpose of venting the gauge. Changes in temperature and environmental pressure can affect how a liquid filled gauge reports pressure. Your new Auto Meter liquid filled gauge may be equipped with a unique vent valve that allows gauge pressure to be equalized to atmosphere, as needed, insuring accurate pressure readings regardless of operating conditions.

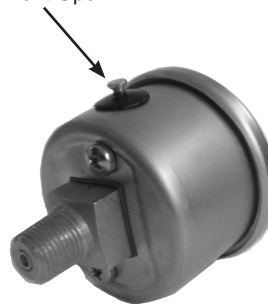
To vent the gauge case push the black band back covering the vent valve head and gently lift it up slightly, **DO NOT REMOVE THE VALVE.** Once the valve is raised, gauge case pressure is again equalized to atmosphere, and reported pressure will be accurate. Please push the stem back down and replace the black retaining band immediately after equalizing pressure to reseal the gauge and help retain the valve during vehicle operation.

NOTE: *The gauge must be mounted with the gauge face vertically, (or as close to 90° to the ground as possible) with the vent on top. This is to prevent the gauge from leaking during venting.*

Vented Closed



Vent Open



NOTE: This liquid filled gauge is not intended to be 100% full of liquid. When held vertical, the level can appear to be between 3/4 and 7/8 full.

SERVICE

For service send your product to Auto Meter in a well packed shipping carton. Please include a note explaining what the problem is along with your phone number. If you are sending product back for Warranty adjustment, you must include a copy (or original) of your sales receipt from the place of purchase.

12 MONTH LIMITED WARRANTY

AUTO METER Products, Inc. warrants to the consumer that all AUTO METER High Performance products purchased from an Authorized AUTO METER Reseller will be free from defects in material and workmanship for a period of twelve (12) months from date of the original purchase. Products that fail within this 12 month warranty period will be repaired or replaced at AUTO METER's option, when determined by AUTO METER that the product failed due to defects in material or workmanship. This warranty is limited to the repair or replacement of parts in the AUTO METER High Performance product and the necessary labor done by AUTO METER to effect the repair or replacement of the AUTO METER High Performance product. In no event shall AUTO METER's cost to repair or replace an AUTO METER High Performance Product under this warranty exceed the original purchase price of the AUTO METER High Performance Product. Nor shall AUTO METER Products, Inc. be responsible for special, incidental or consequential damages or costs incurred due to the failure of an AUTO METER High Performance Product. This warranty applies only to the original purchaser of the AUTO METER High Performance Product and is non-transferable. This warranty also applies only to AUTO METER High Performance Products purchased from an Authorized AUTO METER Reseller. All implied warranties shall be limited in duration to the said 12 month warranty period. Breaking the instrument seal, improper use or installation, accident, water damage, abuse, unauthorized repairs or alterations voids this warranty. AUTO METER disclaims any liability for consequential damages due to the breach of any written or implied warranty on all products manufactured by AUTO METER Products, Inc. For a comprehensive listing of Un-Authorized Auto Meter Resellers please visit www.autometer.com/autometerlocator/index/unauthorized.

FOR SERVICE SEND TO: AUTO METER PRODUCTS, INC. 413 W. Elm St., Sycamore, IL 60178 USA (866) 248-6357
Email us at service@autometer.com

INSTALLATION INSTRUCTION

1½" PRESSURE GAUGES



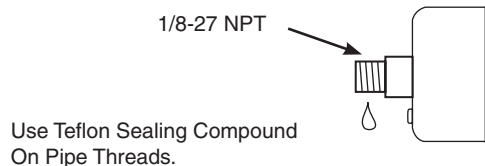
Preliminary Steps

1. Read instructions thoroughly. Please consult a qualified mechanic if you have not had training in the proper installation of instruments.
2. Determine ideal mounting location. Consult your vehicle's repair manual to locate:
 - A) Fuel Pressure Port
 - B) Oil Pressure Port
 - C) Any other Pressure port

CAUTION: Some late model vehicles use electronic sensors in their pressure and temperature senders for engine control functions. Before removing the original senders, we recommend that you contact your Auto Dealer to be sure no critical functions will be disrupted. With pressure gauges, it is beneficial to add a T-fitting to install your new gauge and to keep the warning light operational. This allows you to monitor the pressure and still have a warning light to indicate emergency conditions.

INSTALLATION

1. Locate pressure port. This gauge is designed for 1/8" NPT. In some cases an adapter may be necessary.
2. Install T-fitting if needed to share test port with additional gauge(s).
3. Ensure the regulator is mounted with the gauge face vertical, at the right angles to the ground, with the Vent Valve at the top.
4. Apply Teflon sealing compound to insure a leak-free connection.
5. Install gauge into pressure port, being careful not to over tighten.
6. After installation, start engine and check all connections for leaks.



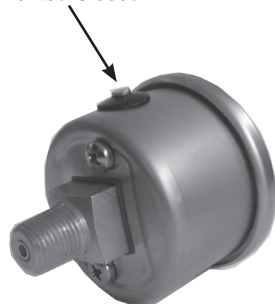
OPERATION

Your gauge may be equipped with an external vent valve for the purpose of venting the gauge. Changes in temperature and environmental pressure can affect how a liquid filled gauge reports pressure. Your new Auto Meter liquid filled gauge may be equipped with a unique vent valve that allows gauge pressure to be equalized to atmosphere, as needed, insuring accurate pressure readings regardless of operating conditions.

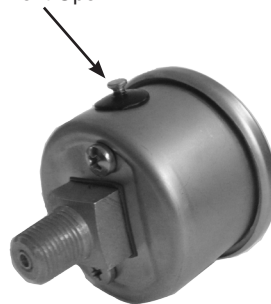
To vent the gauge case push the black band back covering the vent valve head and gently lift it up slightly, **DO NOT REMOVE THE VALVE.** Once the valve is raised, gauge case pressure is again equalized to atmosphere, and reported pressure will be accurate. Please push the stem back down and replace the black retaining band immediately after equalizing pressure to reseal the gauge and help retain the valve during vehicle operation.

NOTE: *The gauge must be mounted with the gauge face vertically, (or as close to 90° to the ground as possible) with the vent on top. This is to prevent the gauge from leaking during venting.*

Vented Closed



Vent Open



NOTE: This liquid filled gauge is not intended to be 100% full of liquid. When held vertical, the level can appear to be between 3/4 and 7/8 full.

SERVICE

For service send your product to Auto Meter in a well packed shipping carton. Please include a note explaining what the problem is along with your phone number. If you are sending product back for Warranty adjustment, you must include a copy (or original) of your sales receipt from the place of purchase.

12 MONTH LIMITED WARRANTY

AUTO METER Products, Inc. warrants to the consumer that all AUTO METER High Performance products purchased from an Authorized AUTO METER Reseller will be free from defects in material and workmanship for a period of twelve (12) months from date of the original purchase. Products that fail within this 12 month warranty period will be repaired or replaced at AUTO METER's option, when determined by AUTO METER that the product failed due to defects in material or workmanship. This warranty is limited to the repair or replacement of parts in the AUTO METER High Performance product and the necessary labor done by AUTO METER to effect the repair or replacement of the AUTO METER High Performance product. In no event shall AUTO METER's cost to repair or replace an AUTO METER High Performance Product under this warranty exceed the original purchase price of the AUTO METER High Performance Product. Nor shall AUTO METER Products, Inc. be responsible for special, incidental or consequential damages or costs incurred due to the failure of an AUTO METER High Performance Product. This warranty applies only to the original purchaser of the AUTO METER High Performance Product and is non-transferable. This warranty also applies only to AUTO METER High Performance Products purchased from an Authorized AUTO METER Reseller. All implied warranties shall be limited in duration to the said 12 month warranty period. Breaking the instrument seal, improper use or installation, accident, water damage, abuse, unauthorized repairs or alterations voids this warranty. AUTO METER disclaims any liability for consequential damages due to the breach of any written or implied warranty on all products manufactured by AUTO METER Products, Inc. For a comprehensive listing of Un-Authorized Auto Meter Resellers please visit www.autometer.com/autometerlocator/index/unauthorized.

FOR SERVICE SEND TO: **AUTO METER PRODUCTS, INC.** 413 W. Elm St., Sycamore, IL 60178 USA (866) 248-6357
Email us at service@autometer.com

INSTALLATION INSTRUCTION

1½" PRESSURE GAUGES



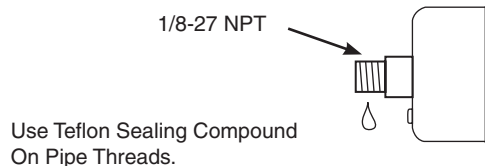
Preliminary Steps

1. Read instructions thoroughly. Please consult a qualified mechanic if you have not had training in the proper installation of instruments.
2. Determine ideal mounting location. Consult your vehicle's repair manual to locate:
 - A) Fuel Pressure Port
 - B) Oil Pressure Port
 - C) Any other Pressure port

CAUTION: Some late model vehicles use electronic sensors in their pressure and temperature senders for engine control functions. Before removing the original senders, we recommend that you contact your Auto Dealer to be sure no critical functions will be disrupted. With pressure gauges, it is beneficial to add a T-fitting to install your new gauge and to keep the warning light operational. This allows you to monitor the pressure and still have a warning light to indicate emergency conditions.

INSTALLATION

1. Locate pressure port. This gauge is designed for 1/8" NPT. In some cases an adapter may be necessary.
2. Install T-fitting if needed to share test port with additional gauge(s).
3. Ensure the regulator is mounted with the gauge face vertical, at the right angles to the ground, with the Vent Valve at the top.
4. Apply Teflon sealing compound to insure a leak-free connection.
5. Install gauge into pressure port, being careful not to over tighten.
6. After installation, start engine and check all connections for leaks.



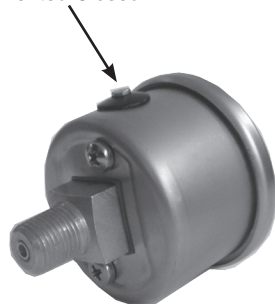
OPERATION

Your gauge may be equipped with an external vent valve for the purpose of venting the gauge. Changes in temperature and environmental pressure can affect how a liquid filled gauge reports pressure. Your new Auto Meter liquid filled gauge may be equipped with a unique vent valve that allows gauge pressure to be equalized to atmosphere, as needed, insuring accurate pressure readings regardless of operating conditions.

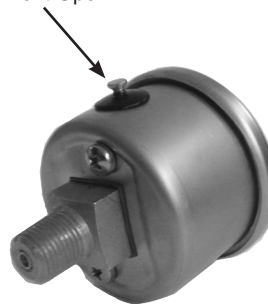
To vent the gauge case push the black band back covering the vent valve head and gently lift it up slightly, **DO NOT REMOVE THE VALVE.** Once the valve is raised, gauge case pressure is again equalized to atmosphere, and reported pressure will be accurate. Please push the stem back down and replace the black retaining band immediately after equalizing pressure to reseal the gauge and help retain the valve during vehicle operation.

NOTE: *The gauge must be mounted with the gauge face vertically, (or as close to 90° to the ground as possible) with the vent on top. This is to prevent the gauge from leaking during venting.*

Vented Closed



Vent Open



NOTE: This liquid filled gauge is not intended to be 100% full of liquid. When held vertical, the level can appear to be between 3/4 and 7/8 full.

SERVICE

For service send your product to Auto Meter in a well packed shipping carton. Please include a note explaining what the problem is along with your phone number. If you are sending product back for Warranty adjustment, you must include a copy (or original) of your sales receipt from the place of purchase.

12 MONTH LIMITED WARRANTY

AUTO METER Products, Inc. warrants to the consumer that all AUTO METER High Performance products purchased from an Authorized AUTO METER Reseller will be free from defects in material and workmanship for a period of twelve (12) months from date of the original purchase. Products that fail within this 12 month warranty period will be repaired or replaced at AUTO METER's option, when determined by AUTO METER that the product failed due to defects in material or workmanship. This warranty is limited to the repair or replacement of parts in the AUTO METER High Performance product and the necessary labor done by AUTO METER to effect the repair or replacement of the AUTO METER High Performance product. In no event shall AUTO METER's cost to repair or replace an AUTO METER High Performance Product under this warranty exceed the original purchase price of the AUTO METER High Performance Product. Nor shall AUTO METER Products, Inc. be responsible for special, incidental or consequential damages or costs incurred due to the failure of an AUTO METER High Performance Product. This warranty applies only to the original purchaser of the AUTO METER High Performance Product and is non-transferable. This warranty also applies only to AUTO METER High Performance Products purchased from an Authorized AUTO METER Reseller. All implied warranties shall be limited in duration to the said 12 month warranty period. Breaking the instrument seal, improper use or installation, accident, water damage, abuse, unauthorized repairs or alterations voids this warranty. AUTO METER disclaims any liability for consequential damages due to the breach of any written or implied warranty on all products manufactured by AUTO METER Products, Inc. For a comprehensive listing of Un-Authorized Auto Meter Resellers please visit www.autometer.com/autometerlocator/index/unauthorized.

FOR SERVICE SEND TO: **AUTO METER PRODUCTS, INC.** 413 W. Elm St., Sycamore, IL 60178 USA (866) 248-6357
Email us at service@autometer.com