



# Chevy Pocket Style® Fender Flares Set of 4

## STEP 1 – PRIOR TO INSTALLATION

- A) Bushwacker only approves installing the flares according to these written instructions with the hardware provided. **WARNING:** Failure to install according to these instructions will invalidate the warranty. This includes, but is not limited to using alternative installation methods, hardware, or materials. **DO NOT USE:** Loctite, SuperGlue, or similar products on the hardware or the flares.
- B) **Fit:** Verify the fit of the flares to vehicle. (Some filing, sanding, or cutting may be necessary to ensure proper fit).
- C) **Painting:** (Optional) if paint is desired it must be done prior to installing flares on vehicle. Clean outer surface with a good grade degreaser. **DO NOT USE LACQUER THINNER OR ENAMEL REDUCER AS A DEGREASER.** Wipe outer surface thoroughly with a tack rag prior to paint. Application of plastic adhesion promoter for ABS plastic as per your paint system manufacturer's recommendations is required. Paint flares using a high quality enamel, or polyurethane automotive paint. If painting edge trim (not recommended), use a flex additive.
- D) **Performance:** Using larger Tires may increase the area required to turn the vehicle. Some Tire/Rim combinations may require lowering bump stops and/or installing steering stops to prevent tire from contacting flare.
- E) **Exhaust System:** Modifications may be necessary to maintain a minimum 4" clearance between flares and exhaust pipes. (Exhaust gases should not vent directly onto flares)
- F) **Metal Protection:** All exposed fasteners and bare metal should be treated with rust resistant paint **BEFORE** installing flares. Spray inner fender wells with undercoating **AFTER** flare attachments have been completed.
- G) **Decals:** Flares may interfere with existing decals on vehicle. If you wish, remove decals prior to installation of flares.
- H) **Care & Cleaning:** Bushwacker fender flares are built to last; any detergent you use to wash your vehicle is sufficient to clean the flare. Do not use any harsh abrasive detergents.

**Set Part #40918**  
**Rev-8 1/25/2016**

For complete fitment info visit : [www.bushwacker.com](http://www.bushwacker.com)

## TOOLS FOR EASY INSTALLATION:






- Utility Knife
- Jack and Jack Stands (Optional)
- #2 Phillips Drive bit
- Drill Motor, 5/16 drill bit
- 1/2" Wrench
- T45 Torx Bit
- Safety Glasses

**PLEASE READ:** Dirt and debris can become lodged between the fender flares and the vehicle's fenders, causing scratching and paint wear from vibration. Lund International is not responsible for any damage, and the installation of our fender flares is done with the buyer's understanding that this scratching and paint wear may occur.

## LIMITED LIFETIME WARRANTY AGAINST ANY MANUFACTURING DEFECTS

To claim a warranty, you must provide Proof of Purchase.

## Included in Hardware Kit:

- |    |   |    |   |    |   |    |  |    |   |    |   |
|----|---|----|---|----|---|----|--|----|---|----|---|
| 1. |  | 2. |  | 3. |  | 4. |  | 5. |  | 6. |  |
|    | SW1-0067,<br>5/16 x 18 x 3/8"<br>SS Torx Screw,<br>40 pcs.                          |    | NU1-0019,<br>5/16-18 Jam Fin.<br>Nylock Nut,<br>40 pcs.                             |    | WA1-0010,<br>.327 x.625 x.31<br>SS Washer,<br>40 pcs.                               |    | RV1-P009,<br>8x15x20mm<br>Retainer,<br>22 pcs.                                       |    | SW1-0052,<br>T-45 Torx Bit,<br>1 pc.  |    | GP1-0008,<br>Duro (NC02/S 70)<br>Edge Trim,<br>336 In                                 |

# FLARE INSTALLATION PROCEDURES

## Step 1: Painting (Optional)

It is recommended that painting (when desired) be done prior to installation.

- (A) Sand (optional) before application of paint.
- (B) Clean outer surface with a good grade degreaser. DO NOT USE LACQUER THINNER OR ENAMEL REDUCER AS A DEGREASER. Wipe outer surface thoroughly with a tack rag prior to painting.
- (C) Paint flares using a high quality lacquer, enamel, or polyurethane automotive paint. Application of a primer coat is optional.
- (D) If painting edge trim (not recommended) use a flex additive.

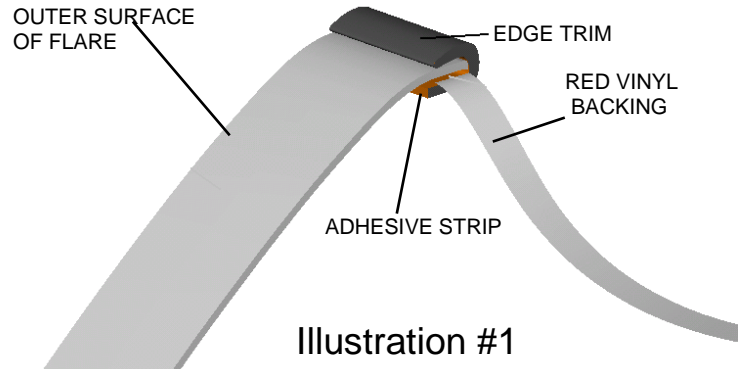


Illustration #1

## Step 2: Preparing the Work Area (Front and Rear)

- (A) Support vehicle and remove wheel using jack and jack stands. (Optional)
- (B) Remove factory fender trim and mud flaps (when installed).

## Step 3: Edge Trim Installation (See Figure #1)

- (A) Peel two to three inches of red vinyl backing away from edge trim tape. Applying the adhesive side of the edge trim to the inner side of the flare, affix the edge trim to the top edge of the flare (the portion that comes in contact with the side of the vehicle).
- (B) Press edge trim into place along the top edge of the flare in one-foot increments, pulling red vinyl backing free as you continue to work your way

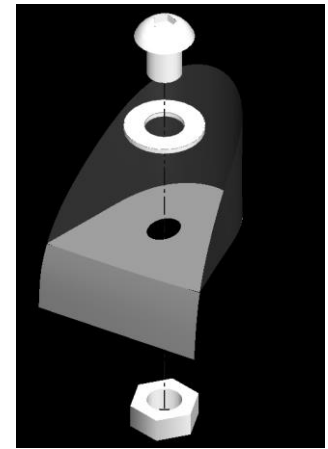


Illustration #2

6710 N. CATLIN AVE. • PORTLAND, OR 97203 • 503-283-4335 • 1-800-234-8920 (USA AND CANADA) • FAX 503-283-3007

## Step 4: Front Flare Installation

- (A) Insert stainless steel screw and washer into front of flare, secure with nyloc nut, using a T45 Torx bit. (See illustration #2)
- (B) Hold front flare in place on fender, secure with supplied Tuf-Lock fasteners through the holes drilled in the flare, into the holes in the fender body wheel well. (See arrows in illustration #3).

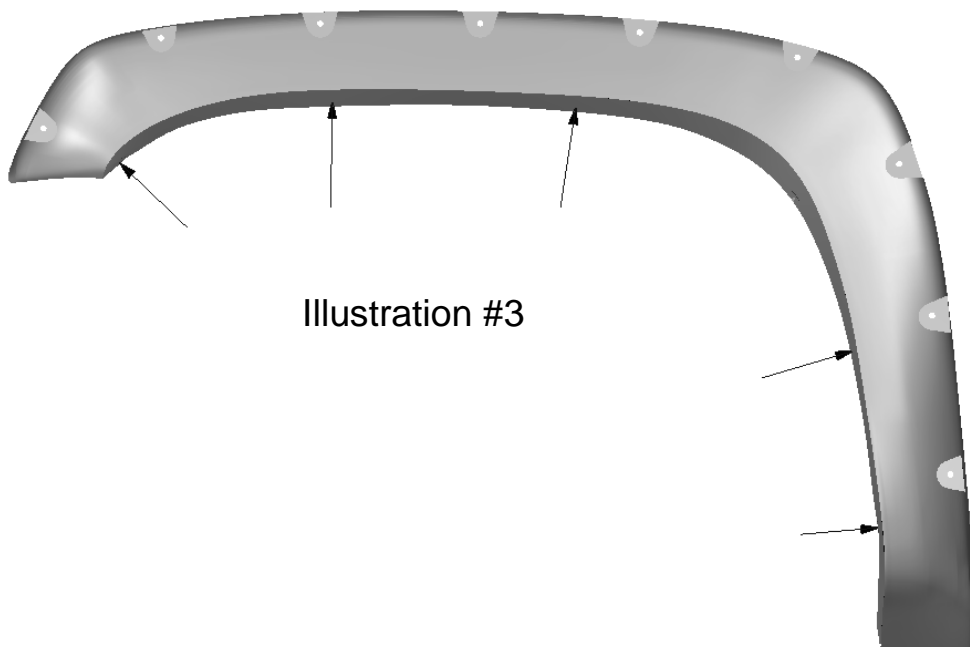


Illustration #3

### Step 5: Rear Flare Installation

- (A) Insert stainless steel screw and washer into front of flare, secure with nyloc nut, using a T45 Torx bit. **(See illustration #2)**
- (B) Hold rear flare in place on fender, secure with supplied Tuf-Lock fasteners through the holes drilled in the flare, into the holes in the fender body wheel well. (See arrows in illustration #4).

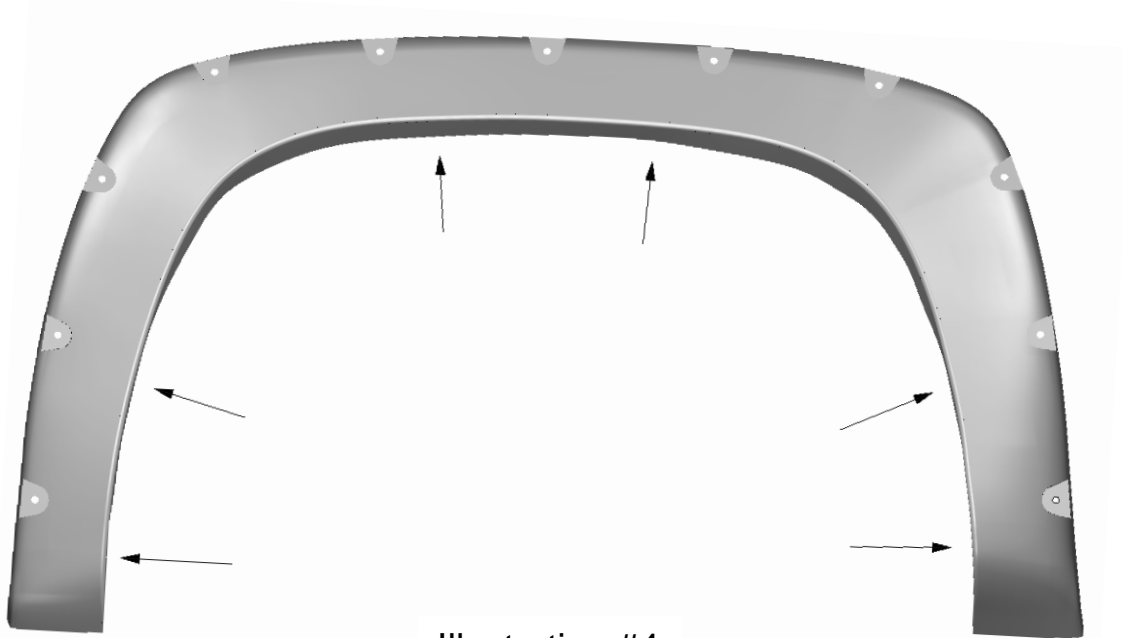


Illustration #4