

**CS-FBDF05-2.5 – 2.5” Front Bump Drop**  
**CS-FBDF17-2.5 – 2.5” Front Bump Drop**  
**CS-FBDF05-4.5 – 4.5” Front Bump Drop**  
**CS-FBDF05-4.5-SHORT – 4.5” Dominator Front Bump Drop**

**NOTE:**

---

Please review the product instructions prior to attempting installation to ensure installer is equipped with all tools and capabilities necessary to complete the product installation. We recommend thoroughly reading the instructions at least twice prior to attempting Installation.

Before beginning disassembly of the vehicle, check the “What’s Included” section of the instructions to ensure you’ve received all parts necessary to complete installation. Further, verify that the parts received are PROPER TO YOUR application (year range, motor, etc.) to avoid potential down-time in correcting potential discrepancies. Any discrepancies will be handled by Carli Suspension and the correcting products will be shipped UPS Ground.

**LIFETIME PRODUCT WARRANTY**

---

Carli Suspension provides a limited lifetime product warranty against defects in workmanship and materials from date of purchase to the original purchaser for all products produced by Carli Suspension. Parts not manufactured by, but made to Carli Suspension’s specifications by third party manufacturers will carry a warranty through their respective manufacturer. (i.e. King Shocks, Bilstein Shocks, Fox Shocks). Deaver Leaf Spring’s warranty will be processed by Carli Suspension.

Proof of purchase (from the original purchaser only) will be required to process any warranty claims. Carli Suspension products must be purchased for the listed Retail Price reflected by the price listed on the Carli Suspension Website at the time of purchase. Carli Suspension reserves the right to refuse warranty claims made by any customer refusing or unable to present proof of purchase, or presenting proof of purchase reflecting a price lower than Carli Suspension’s Retail Price at the time the item was purchased.

Carli Suspension’s Limited Lifetime Warranty excludes the following parts which are subject to wear: Track Bar Bushings, Track Bar Heim Joints, Limit Straps, Control Arm Bushings, Radius Arm Bushings, Shock Bushings, Sway Bar End Link Heim Joints, Shock Seals, Shock Bearings, and Corrosion on Shock Shafts or Bodies. These items will be warranted for a period of 60 days from the date of purchase only if determined to be installed properly signifying manufacturing defect. Carli Suspension cannot warrant a product’s cosmetic finish due to the varying extreme elements that may be encountered.

Any alterations, modifications, or improper installation, of the product will void this warranty. Products should be inspected for defect upon receipt and approved before installation. Any defect in NEW product will be warranted if returned before installation in its original packaging. Carli Suspension’s obligation under this warranty is limited to the repair or replacement of the defective product only. All costs of removal, installation or reinstallation, freight charges, incidental or consequential damage are expressly excluded from this warranty.

Carli Suspension is not responsible for damages and/or warranty of other vehicle parts related or non-related to the installed Carli Suspension product. This warranty shall not apply to any product that has been subjected to accident, negligence, alteration, abuse or misuse as determined by Carli Suspension. Carli Suspension reserves the right to refuse warranty claims if produced parts are combined and/or substituted with other aftermarket suspension products. Combination and/or substitution of other aftermarket suspension components may cause premature wear and/or product failure. Carli Suspension reserves the right to change/alter product without obligation to update any previously purchased products.



## PARTS CHECKLIST

### **CS-FBDF05-2.5– Front Bump Drop**

- (2) Fabricated Bump Stop Drops
- (2) M8x50mm Bolts
- (2) M8 Washers
- (2) *Additional Washer and 2 Nuts if Dominator System*

### **CS-FBDF17-2.5**

- (2) Fabricated Bump Stop Drops
- (2) M8x50mm Bolts
- (2) M8 Washers
- Vacuum Line extension with Barbed fittings

### **CS-FBDF05-4.5 (SHORT) – Front Bump Drop**

- (2) Fabricated Bump Stop Drops
- (2) 5/16” Bolts
- (4) 5/16” Washers
- (2) 5/16” Nuts

## NOTES

- Bump Stop extensions are easiest to install with the coil springs removed.
- If installing on a Dominator, Coilover, or Coilover Bypass Equipped vehicle, Install the bump drops AFTER changing the coil buckets/coilover mounts as these bump-stop extensions mount to the bottom of the Carli Dominator Buckets/Coilover Brackets.

## INSTRUCTIONS

### **CS-FBDF05-2.5– Front Bump Drop**

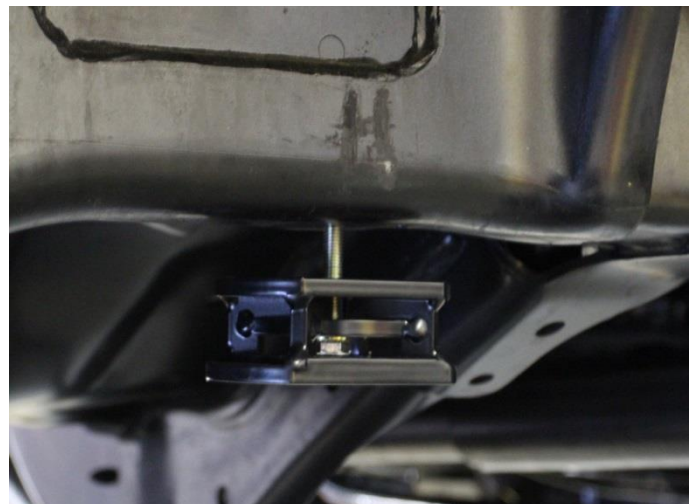
1. If not already removed, remove factory front bump stops from the cups that hold them. They're pressed in and require a bit of manipulation to remove. These will be reused.
2. Remove bump stop cup from the frame mount and set aside; this will be reused later.
3. **Commuter:** Install Carli front bump stop drops between the frame and OEM mount and secure using supplied M8 bolts & washers into the factory threads in the coil bucket. Torque to 18lb/ft.  
**Dominator:** Install Carli front bump stop drops between the Fabricated Coil Bucket and OEM Bump Cup secure using supplied M8 bolts, washers & Nuts. Torque to 18lb/ft.
4. Reinstall the factory foam bump stops into the OEM mounts. Continue to the next step in the Kit Instruction.

### **CS-FBDF05-4.5 (SHORT) – Front Bump Drop**

1. If not already removed, remove factory front bump stops from the cups that hold them. They're pressed in and require a bit of manipulation to remove. These will be reused.
2. Remove bump stop cup from the frame mount and set aside; this will be reused later.
3. Using a 5/16 drill bit, drill out the threads in the frame where the O.E.M. bump stops attach to the frame.
4. Install Carli front bump stop drops and OEM mount, using supplied 5/16 bolts, washers, and nuts. Torque to 18lb/ft.
5. Reinstall the factory foam bump stops into the OEM mounts.
6. Continue to the next step in the Kit Instruction.

### **CS-FBDF17-2.5 – Front Bump Drop**

1. If not already removed, remove factory front bump stops from the cups that hold them. They're press in and only require a bit of manipulation to remove. These will be reused.
2. Remove bump stop cup from the frame mount using a 13mm Socket.
3. Install Carli front bump stop drops with the flat portion facing outward (toward the coil spring).
4. Secure using supplied M8 bolts & washers into the factory threads in the frame. Torque to 18lb/ft.
5. Reinstall the factory foam bump stops into the Carli Drops.
6. Continue to the next step in the Kit Instruction.



## 2017 Super Duty Vacuum Line Supplement

---

We provide a short extension with Barbed fittings to extend the driver's side factory Vacuum line. Install as shown to the vacuum line secured to motor crossmember.

