

INSTALLATION INSTRUCTIONS

SUBJECT: GM Duramax L5P Fuel Filter Upgrade Kit

FPE-2020-46
November, 2020
Page 1 of 5

FITMENT: 2017 – 2019 L5P Duramax
2020 L5P Duramax

KIT P/N: FPE-L5P-FFBA-1719 (2017-2019)
FPE-L5P-FFBA-20 (2020)

ESTIMATED INSTALLATION TIME: 30 minutes

TOOLS REQUIRED: 18mm socket, 13mm wrench/socket, 14mm wrench or deep well socket, 22mm wrench, T40 torx bit (2020), T30 torx bit, flat head screwdriver/pick.

KIT CONTENTS:

Item	Description	Qty
1	LP5 Fuel Filter Base	1
2	Donaldson Fuel Filter / Water Separator	1
3	1/2" Quick Connect to 3/4-16 Short Style	2
4	SS M6x1x20mm Button Head Screw	3
5	316 SS Threaded Pipe Fitting, Solid Plug	1



WARNINGS:

- Use of this product may void or nullify the vehicle's factory warranty.
- User assumes sole responsibility for the safe & proper use of the vehicle at all times.
- The purchaser and end user releases, indemnifies, discharges, and holds harmless Fleece Performance Engineering, Inc. from any and all claims, damages, causes of action, injuries, or expenses resulting from or relating to the use or installation of this product that is in violation of the terms and conditions on this page, the product disclaimer, and/or the product installation instructions. Fleece Performance Engineering, Inc. will not be liable for any direct, indirect, consequential, exemplary, punitive, statutory, or incidental damages or fines caused by the use or installation of this product.

INSTALLATION INSTRUCTIONS

PROCEDURE:

FPE-2020-46
November, 2020
Page 2 of 5

STEP 1: Disconnect the vehicle batteries.

STEP 2: Locate the OEM fuel filter base.

For 2017-2019 model year trucks, it is located on the frame rail, driver side, directly in front of the fuel tank.

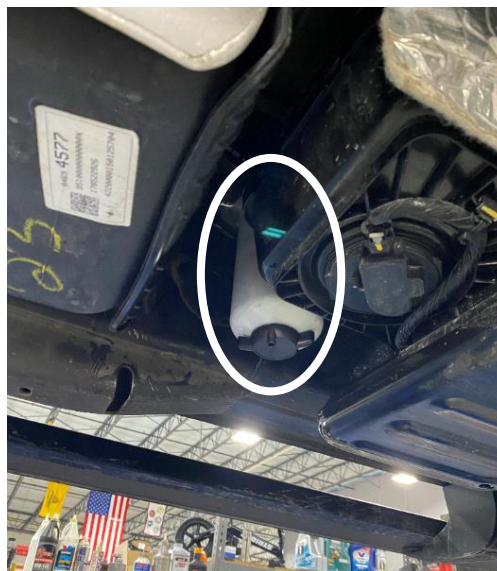
MY 2017 - 2019



For 2020 model year trucks, it is located on the frame rail, driver side, in front of the fuel tank, behind the DEF tank.

The installation instructions for 2017-2019 and 2020 trucks are the same, the only difference being the location on the truck.

MY 2020



STEP 3: Place a pan or a container below the OEM fuel filter.

For 2017-2019, use an 18mm socket to loosen the water in fuel sensor.

For 2020, use a T40 to loosen the water in fuel sensor.

Drain the fuel/water from the OEM filter.



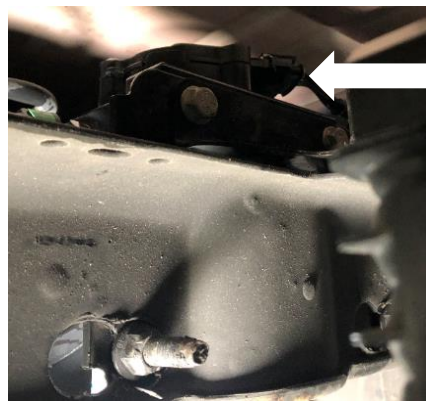
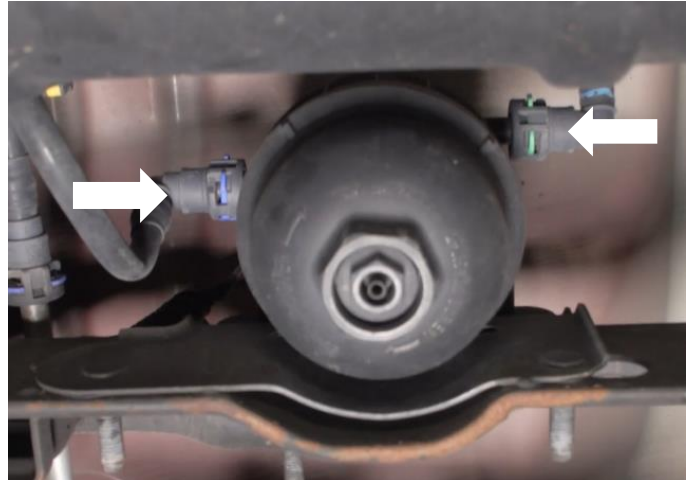
INSTALLATION INSTRUCTIONS

FPE-2020-46
November, 2020
Page 3 of 5

STEP 4: With the pan or container still under the filter, disconnect both quick disconnect fittings from the OEM filter base.

This can be done by un-seating the colored locking tabs, then pulling the connector away from the fitting.

Disconnect the electrical connector.

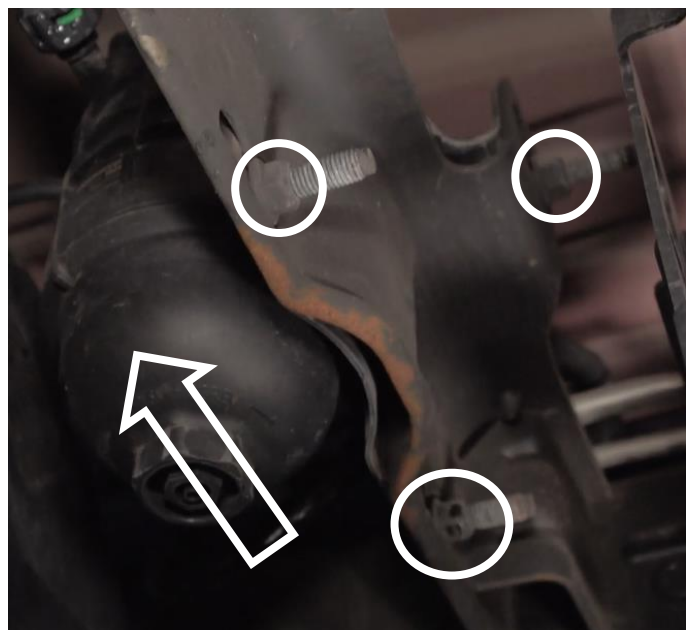


STEP 5: Loosen, but do not remove the 3 retaining nuts.

For 2017-2019, use a 14mm ratcheting wrench or deep well socket.

For 2020 you will have to access these nuts through holes in the driver's side of the frame from outside the frame.

Once they are loose, the OEM filter base assembly can slide towards the center of the vehicle and then removed.



INSTALLATION INSTRUCTIONS

FPE-2020-46
November, 2020
Page 4 of 5

STEP 6: Remove the 3 cap screws securing the fuel heater to the OEM filter base using a T30 torx bit.

Discard the OEM cap screws.

Using a small flat head screwdriver, carefully pry between the base and the heater to unseat the heater O-ring from the base.

Lubricate the O-ring with assembly lube or clean diesel fuel.

Using the new T30 hardware supplied in the kit, reinstall the heater on the new Fleece filter base. It can only be installed one way.

Install the 2 supplied AN fittings to the Fleece filter base using a 22mm wrench. These fittings need to be tight but do not overtighten.

If you are planning on using the pressure sensor port on the Fleece filter base, remove the plug and install the sensor. If you are not planning on using a pressure sensor, make sure the supplied plug is installed (item #5).

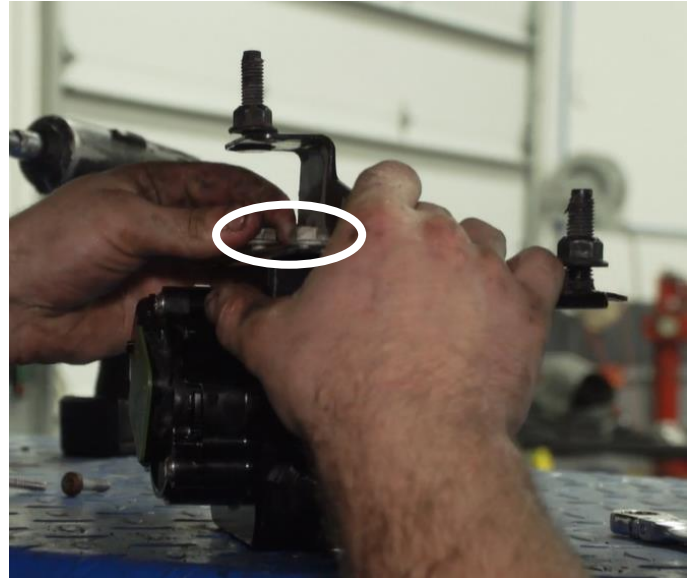


INSTALLATION INSTRUCTIONS

FPE-2020-46
November, 2020
Page 5 of 5

STEP 7: Using a 13mm wrench or socket, remove the 2 cap screws that secure the OEM filter base to the mounting bracket.

Transfer the OEM mounting bracket to the new Fleece filter base, reusing the OEM hardware.



STEP 8: Install the new Fleece filter base and mounting bracket onto the vehicle in the OEM location. Slide the assembly over into the slots. Secure the 3 nuts and make sure they are tight. Make the electrical connection. Reconnect the fuel lines and make sure the locking tabs are engaged. Install the new Donaldson spin on filter.

STEP 11: Re-connect the vehicle batteries.

STEP 12: Prime the fuel system by turning the key (or cycling the start button to "RUN" without your foot on the brake) to "RUN" (not "START"). This will turn the lift pump on.

Let the lift pump run for 10-15 seconds or until it turns off.

Repeat this process 3-4 times to prime the system. Start the truck (it may crank a little longer than usual before starting). Check for leaks.



Visit <https://fleeceperformance.com/resources> for the latest instructions and videos.

For Technical Assistance, contact Fleece Performance Engineering at 855-839-5040.