



KRYPTONITE

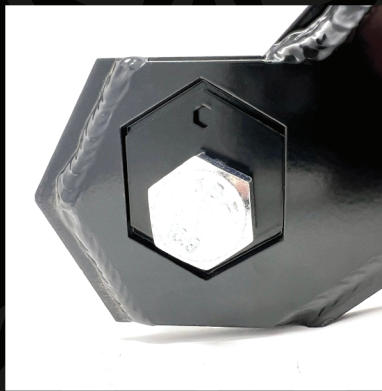
2005-2023 SUPER DUTY RADIUS ARM INSTALLATION

1. Raise the truck on a lift until the suspension unloads, taking spring preload off of the axle. (Shocks/Sway bar may need to be disconnected). Support the axle with jack stands. Removing the front wheel/tires will make for easy access to the forward hardware.
2. Loosen and remove the upper bolt on the radius arm at the axle.
3. Next loosen and remove the rear bolt at the frame allowing the radius arm to pivot on the lower forward bolt.
4. While supporting the radius arm remove the lower bolt. This will free the radius arm from the truck.
5. Set it aside and inspect the bushings on the axle, If worn/cracked replace them at this time.
6. Now in reverse order install your new Kryptonite radius arm. (Refer to [Figure 1](#) for caster plate orientation).
7. Ensure you have the longer **130mm** bolt paired with the caster plates on the lower bolt hole.

Figure 1



Lowest caster setting +2.0°
(stock/leveled)



Midway caster setting +4°
(3"-4" Lift with no drop bracket)



Highest caster setting +6°
(5"-6" Lift with no drop bracket)

Please note these are baseline settings. Supporting mods (Caster shims/drop brackets) may alter placement based on alignment needs.

Target caster numbers fall between 3° to 5°

Continued on back

8. Once the frame bolt is installed (use factory bolt) you will repeat steps 1-7 on the opposite side of the truck.
9. Now that both Death Grip Series radius arms are on the truck; you will install the upper bolts (120mm).
10. Torque all fasteners to factory specifications (Listed Below)

- **Radius Arm to Axle Bolts - 222 ft-lbs**
 - **Track Bar to Frame - 129 ft-lbs**
 - **Track Bar to Axle Nut - 185 ft/lbs**
 - **Upper Shock bolts - 76ft/lbs**
 - **Lower Shock bolts - 76ft/lbs**



SAEJ2492 WARNING: By installing this product, you acknowledge that the suspension of this vehicle has been modified. As a result, this vehicle may handle differently than factory-equipped vehicles. As with any vehicle, extreme care must be used to prevent loss of control or rollover during sharp turns or abrupt maneuvers. Always wear seat belts, and drive safely, recognizing that reduced speeds and specialized driving techniques may be required. Failure to drive this vehicle safely may result in serious injury or death. Do not drive this vehicle unless you are familiar with its unique handling characteristics and are confident of your ability to maintain control under all driving conditions. Some modifications (and combinations of modifications) are not recommended and may not be permitted in your state. Consult your owner's manual, the instructions accompanying this product, and state laws before undertaking these modifications. You are responsible for the legality and safety of the vehicle you modify using these components.

INSTALLATION ALIGNMENT NOTE: Your vehicle may require alignment after product installation. You may incur additional costs to align the vehicle.

INSTALLATION HEADLAMP AIM NOTE: In addition to your vehicle alignment, for your safety and others, it is necessary to check and adjust your vehicle headlamps for proper aim and alignment after product installation. You may incur additional costs to adjust the headlamp system.

INSTALLATION ADVANCED DRIVER ASSISTANCE SYSTEMS (ADAS) NOTE: If your vehicle is equipped with active or passive safety/collision monitoring and/or assistance/avoidance systems including, but not limited to, camera- or radar/sonar-based systems, check and adjust your vehicle's systems for proper aim and function after product installation. In some instances, your vehicle may require OEM dealer service tools and factory-trained technicians to re-calibrate ADAS. You may incur additional costs to adjust ADAS systems.