

# INSTALLATION MANUAL

# NDB-1002



## **ACCESSORY:**

No Drill Bolt on Bracket Kit  
Dodge Cummins 1989 - 1993  
Ford Powerstroke 1999-2012

**FASS**<sup>®</sup>  
Diesel Fuel Systems

ENGINEERED EXCELLENCE

Dear Valued Customer,

**“Made in the USA”** is not just a slogan at FASS; it’s what we live by! FASS is not only assembled in the USA but 98%+ of the FASS product is manufactured in the USA, helping to employ Americans and strengthen America. At FASS, we scrutinize our suppliers and demand the highest quality American-made components. However, this does come at a price, which is one of the main reasons FASS products are more expensive than the competition. Remember price does not dictate quality but quality does dictate price! Here at FASS, we believe it’s worth the commitment and will continue this practice to support America! Our competition is doing exactly the opposite by using foreign-made components.

Building extremely “High-Quality” fuel products is our business. We concentrate all of our efforts in this arena. No one else is as specialized as FASS in what we do! This is one of the ingredients to insure you are running with the “Highest-Quality” fuel system in the world! We have implemented very rigorous testing procedures to provide the “Highest Quality” we have become known for. Not only is our product superior, but customer satisfaction is #1 at FASS. It is our goal to provide the best service possible. Our confidence is evident in the products we make as each product is backed by an industry leading warranty!

Our R & D department, in conjunction with our Dealer Support department, is continually searching for ways to improve quality, expand our product line, and provide superb support to our network of dealers so our customers’ needs and expectations will be exceeded.

To help insure you receive the proper system and customer support at the local level, FASS has a VIP and Authorized Dealer network representing FASS products. We recommend you go to [www.FASSride.com](http://www.FASSride.com), click “Find A Dealer”, put in their ZIP code, select the type of dealer, and see if the company you purchased from is listed. If they are not, put their phone number in the field below the ZIP code field to see if they are listed. Below these two fields is a list of “Terminated/Unauthorized” dealers. You may want to review this list. If the company is not listed or is on the “Terminated/Unauthorized” list, we suggest you return the product immediately to that dealer and call FASS. We’ll recommend you to the nearest dealer.

# INSTALLATION MANUAL

## Follow these steps to ensure a simple installation of your new FASS ACCESSORY

1. *Read the installation manual completely before attempting installation. The installation of this product indicates that the buyer has read and understands the limitations of the FASS manufacturers warranty agreement and accepts the responsibility of its terms and conditions.*
2. Inventory the package components. Notify the place of purchase immediately of any parts missing or damaged.
3. The installation recommendations contained herein are guidelines. Use good judgment and take into consideration your vehicles' accessories.
4. For best results in accuracy and efficiency (due to training, communication, and our relationship with our dealer network), we recommend an Authorized or ViP FASS Fuel Systems dealer for the installation. They are prepared to install the FASS fuel pumps with the most efficiency. If a situation/problem arises during the installation, they are the most prepared for that situation/problem. DPPI is not responsible for any installation mistakes.
5. If you have any questions or concerns that can not be addressed with your dealer, email or call FASS.
6. If any installation procedure is uncertain, contact FASS technical support.

Email [techsupport@FASSride.com](mailto:techsupport@FASSride.com) with the following information:

- Your Name, address and daytime phone number
- Model
- Serial Number
- Last 6 of vehicles' VIN
- Date of purchase
- Nature of Your Concern

Call customer service; [636-433-5410](tel:636-433-5410) with the following information:

- Model
- Serial Number
- Last 6 of vehicles' VIN
- Date of purchase



# CONTENTS



4 Hex Bolt 3/8" -16x 1 1/2"



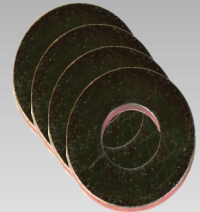
3 Hex Bolt 1/4"-20x1 3/4"



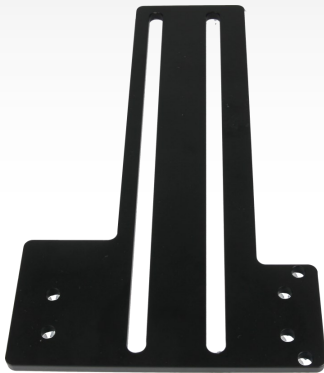
4 Locking Nut 3/8"



3 WA-1001D



4 3/8" Washers



PBR-2001



PFB-2002



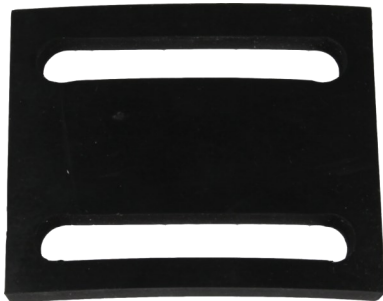
1 1/2" Washers



1 Hex Bolt 1/2" -20 x 1 1/2"



PFB-2001C



RS-2002

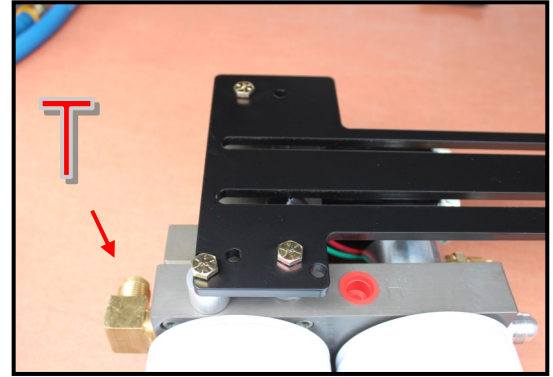
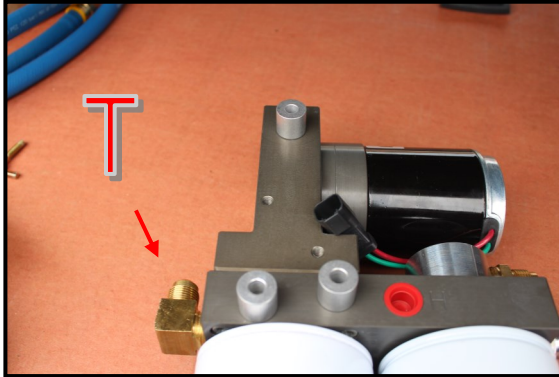


RS-2001

**Note: Refer to pages 5-11 when installing on Dodge pickup truck applications and pages 11 when installing on Ford pickup truck applications.**

## 1989-1993 Dodge Applications

- A. For fitting purposes. Secure PBR-2001 to pump assembly lightly with (3) 1/4"-20x1 3/4 bolts and (3) WA-1001D. This assembly will be used in future steps for correct fitting of brackets. **(Note: Bracket maybe flipped to accommodate your application.)**



- B. Insert PFB-2001C in to bed channel align the nut with the opening on the channel.



- C. Secure PFB-2002 and RS-2001 with (1) hex bolt 1/2" -20 x 1 1/2" and (1) 1/2" washer to PFB-2001C

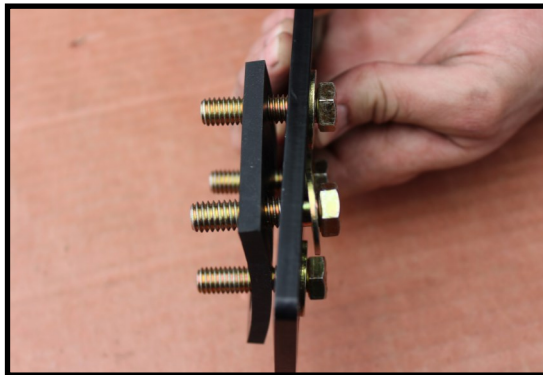


## 1989-1993 Dodge Applications

- D. Position the PBR-2001 to the PFB-2002 pump assembly at the mounting location and check for fit. Once location is established mark location for mounting in next step.



- E. Assemble the FASS pump bracket PBR-2001 using the RS-2002 spacer between PFB-2002 and PBR-2001 bracket with (4) 3/8 bolts, nuts, and washers. **Note: Torque bolts not flange nut.**

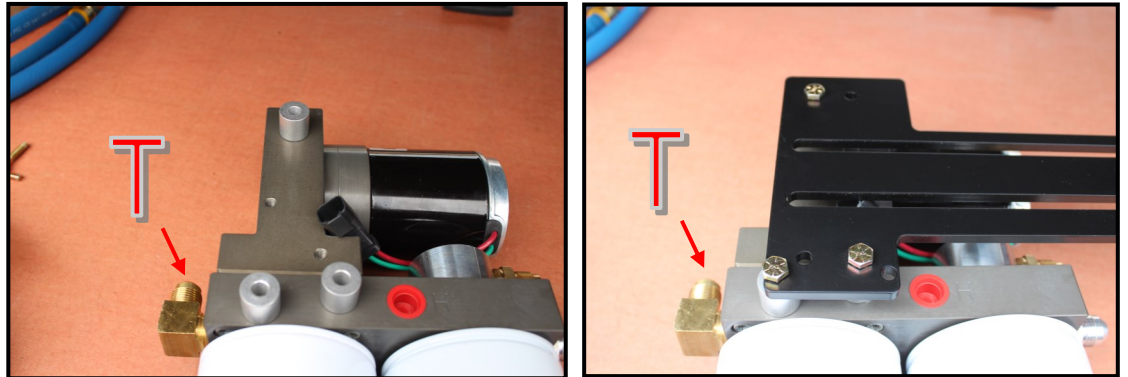


- G. Once secure use (3) 1 3/4 bolts and 3-WA-1001D spacers to mount the pump to the bracket.

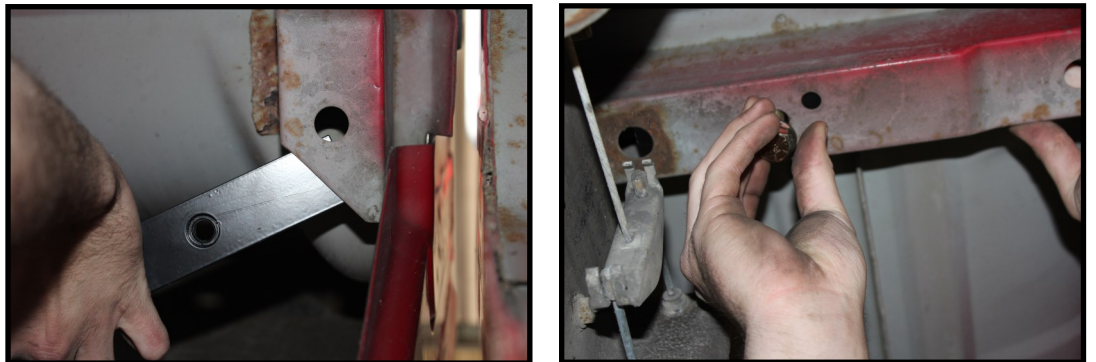


## 1999-2012 Ford Applications

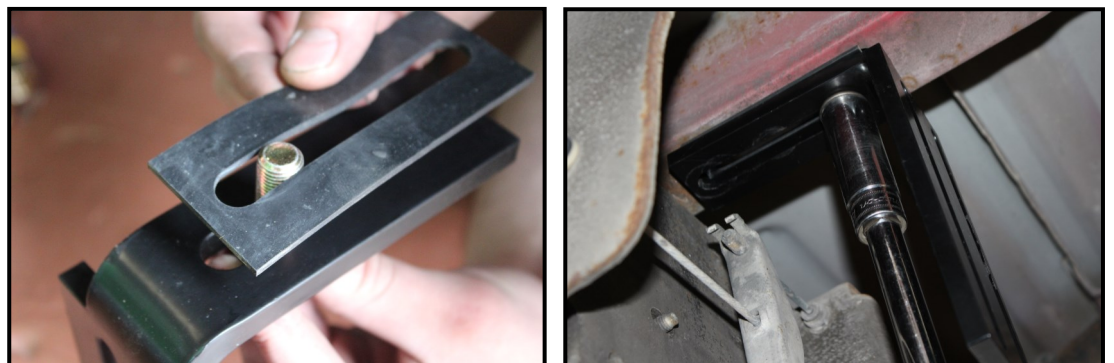
- A. For fitting purposes. Secure PBR-2001 to pump assembly lightly with (3) 1/4"-20x1 3/4 bolts and (3) WA-1001D. Assembly will be used in future steps for correct fitting of brackets. **(Note: Bracket maybe flipped to accommodate your application.)**



- B. Insert PFB-2001C in to bed channel align the nut with the opening on the channel.



- C. Secure PFB-2002 and RS-2001 with (1) hex bolt 1/2" -20 x 1 1/2" and (1) 1/2" washer to PFB-2002C

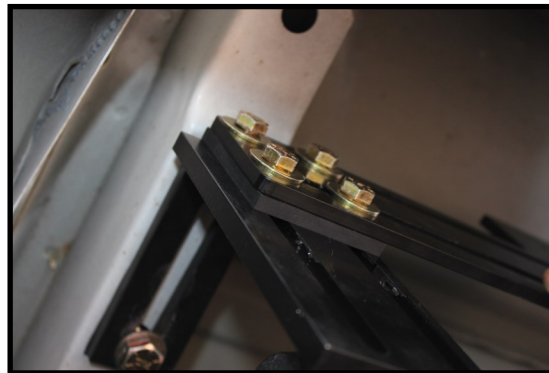
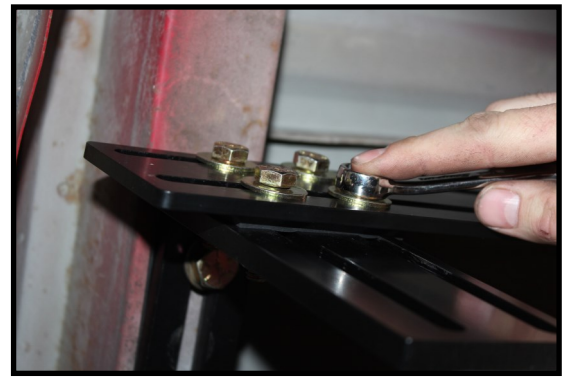
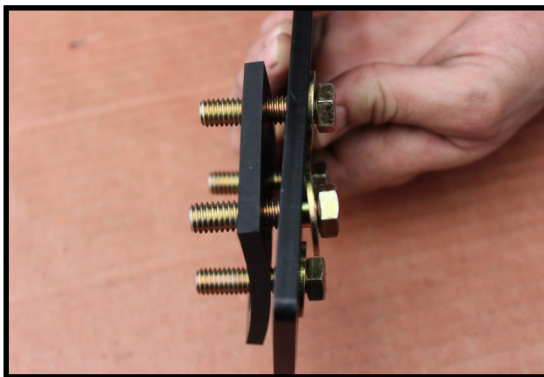


## 1999-2007 2011-2012 Ford Applications

- D. Position the PBR-2001 to the PFB-2002 pump assembly at the mounting location and check for fit. Once location is established mark location for mounting in next step.



- E. Assemble the FASS pump bracket PBR-2001 using the RS-2002 spacer between PFB-2002 and PBR-2001 bracket with (4) 3/8 bolts, nuts, and washers. **Note: Torque bolts not flange nut.**



- F. Once secure use (3) 1 3/4 bolts and (3)WA-1001D spacers to mount the pump to the bracket.



## 2008-2010 Ford Applications (Continuation off of Page 7)

- B. Insert PFB-2001C in to bed channel align the nut with the opening on the channel.



- C. Secure PFB-2002 and RS-2001 with (1) hex bolt 1/2" -20 x 1 1/2" and (1) 1/2" washer to PFB-2002C

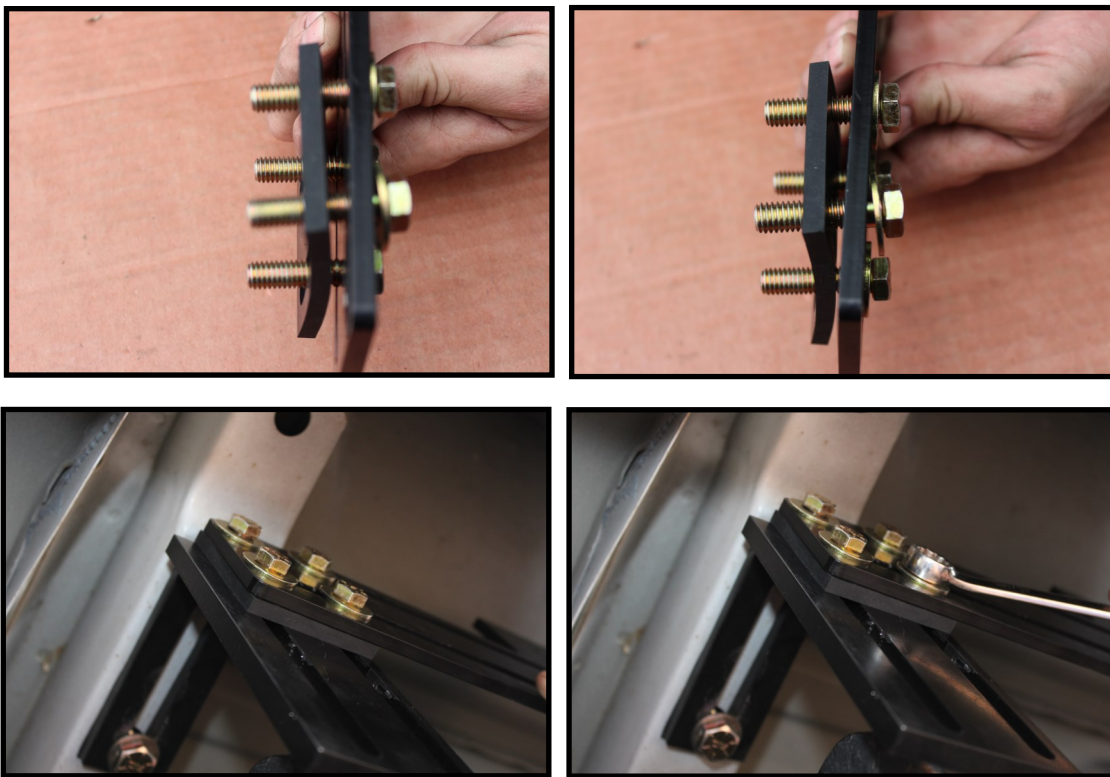


- D. Position the PBR-2001 to the PFB-2002 pump assembly at the mounting location and check for fit. Once location is established mark location for mounting in next step.



## 2008-2010 Ford Applications

- F. Assemble the FASS pump bracket PBR-2001 using the RS-2002 spacer between PFB-2002 and PBR-2002 bracket with (4) 3/8 bolts, nuts, and washers. **Note: Torque bolts not flange nut.**



- G. Once secure use (3) 1 3/4 bolts and (3)WA-1001D spacers to mount the pump to the bracket.



# NOTES