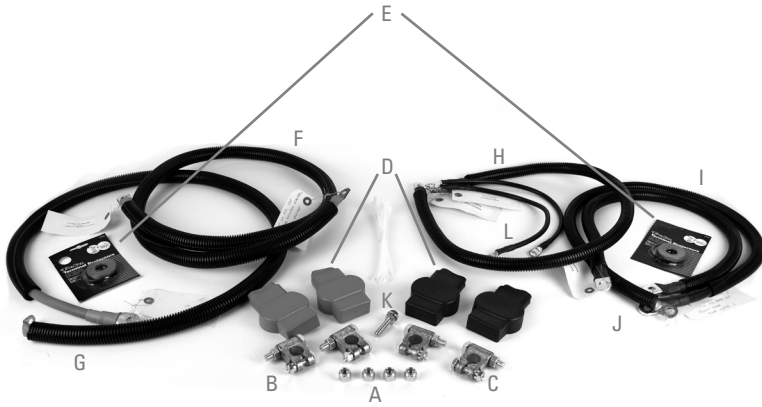




PART NO. XD432

**XDP HD REPLACEMENT BATTERY CABLE SET
INSTALLATION MANUAL**



CODE	DESCRIPTION	QTY
A	Lock Nuts	4
B	Positive (+) Military Terminals	2
C	Negative (-) Military Terminals	2
D	Red And Black Military Covers	4
E	Terminal Protectors	2
F	Battery To Battery W/ Batt To Batt Tag (Red)	1
G	Battery To Starter W/ Battery To Starter Tag (Red)	1
H	Battery To Frame W/ Left Negative Tag (Black)	1
I	Battery To Engine + Battery To Body W/ Right Negative Tag (Black)	1
J	Battery To Engine + Engine To Frame W/ Battery To Engine, Engine End Tag (Black)	1
K	Screw #19251	1
L	Small Lug Mil Term Adapter With One Screw Each	2



BEFORE REMOVING ANY PARTS FROM YOUR TRUCK, PLEASE COMPARE THE ITEMS YOU HAVE RECEIVED WITH THE PACKING LIST PROVIDED TO VERIFY THAT YOU HAVE EVERYTHING NECESSARY TO INSTALL YOUR NEW XDP HD REPLACEMENT BATTERY CABLE SET.

8mm Socket/ Wrench
15mm Socket / Wrench
Razor Blade

13mm Socket / Wrench
16mm Socket/ Wrench
Drill

10mm Socket/ Wrench
Push Pin Tool
Step Drill Bit



BEFORE YOU BEGIN! Ensure that the vehicle has not been in use and that the engine is cool to the touch. Always wear eye protection when working on any vehicle.

- 1 Disconnect the negative battery terminals at both batteries by using an 8mm wrench. Set the negative cables aside where they cannot come in contact with the batteries. (Figure 1)



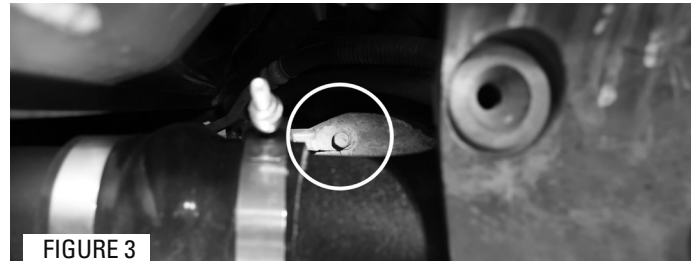
FIGURE 1

- 2 Remove the air intake assembly by using an 8mm socket. Loosen the clamp, disconnect the MAF sensor and filter minder, then twist the air box out of its mounting location as one unit (some aftermarket intakes may differ). (Figure 2)



FIGURE 2

- 3** Remove bolt from ground cable located on driver side of frame rail using a 13mm socket. (Figure 3)



- 4** Remove the driver side positive cable using an 8mm socket. Remove nut connecting power supply eyelet to the fuse box. Use a 10mm socket to loosen terminal clamp nut. (Figure 4)



- 5** Remove the 2 upper radiator support brackets by loosening the 2 bolts on each bracket using an 8mm socket. (Figure 5)



- 6** Remove the 3 harness clips located on upper radiator support bracket using a push pin tool. (Figure 6)



- 7** Remove passenger charge air pipe using an 11mm socket. Loosen the clamps at the turbo charger and intercooler and set pipe aside. (Figure 7)



- 8** Remove the passenger side positive cable using an 8mm socket. Remove nut connecting power supply eyelet to the glow plug module. Use a 10mm socket to loosen terminal clamp nut. (Figure 8)



- 9** Remove ground cable bolt located on passenger side frame rail using a 13mm socket. Using an 8mm socket, remove ground bolt connecting to passenger side fender (battery hold down may need to be loosened to access the passenger fender bolt ground). (Figure 9)

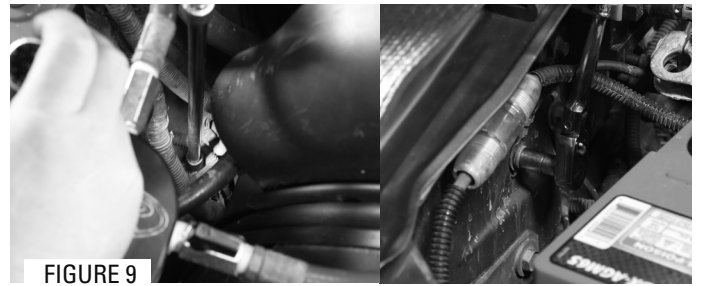


FIGURE 9

- 10** Using a 15mm socket, remove nut from stud holding positive battery cable bracket. Stud is located on lower front cover near the ac compressor (bracket will be reused on new cable). (Figure 10)

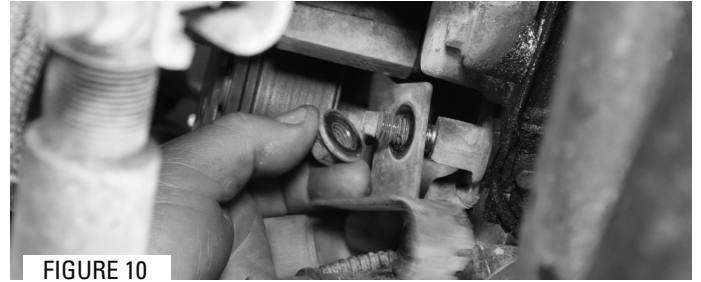


FIGURE 10

- 11** Remove ground stud bolt using a 15mm socket (passenger side front of block). (Figure 11)

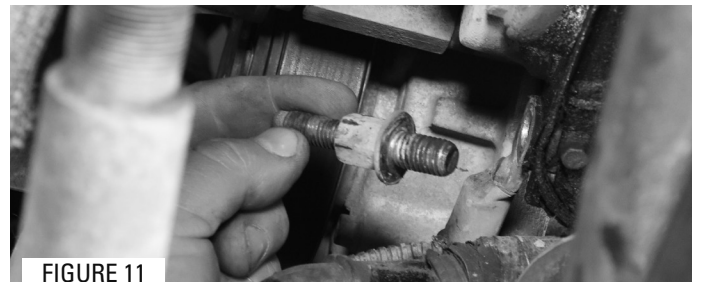


FIGURE 11

- 12** Disconnect block heater cord from heater element located above starter. (Figure 12)



FIGURE 12

- 13** Remove main positive battery cable connection at starter using a 16mm socket and an 8mm socket on the ignition wire connected to solenoid. (Figure 13)

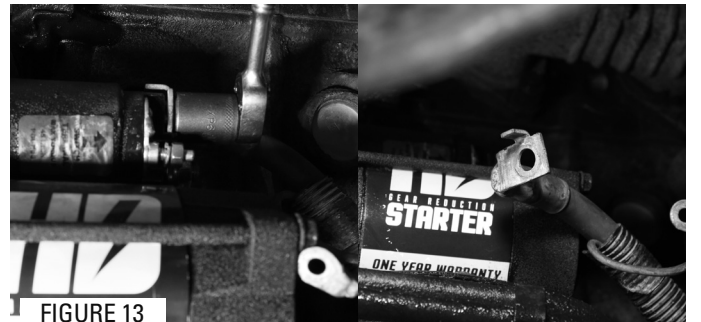


FIGURE 13

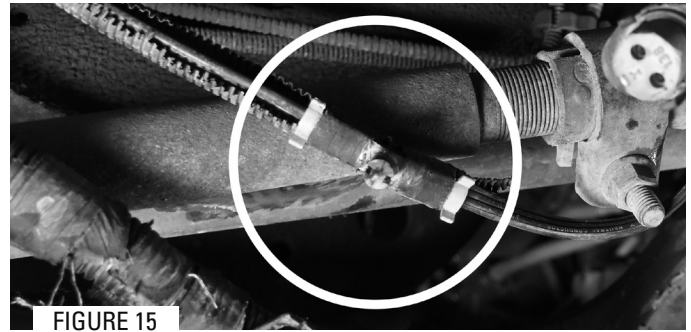
- 14** Using a 10mm socket, remove the nut that holds the positive battery cable bracket to the transmission line along the side of the oil pan (passenger side). (Figure 14)



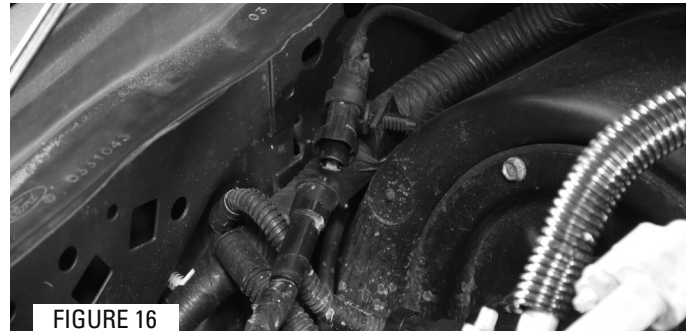
FIGURE 14

15 Carefully pull the disconnected cables from Step 13 towards the front of vehicle between the engine and frame rail.

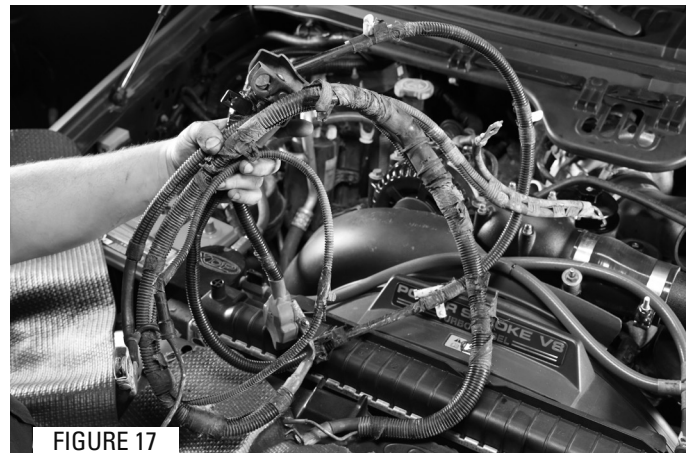
16 Separate the block heater cord connected to positive battery cable using a pair of pliers or push-pin/clip removal tool to remove tree clip fastener. (Figure 15)



17 Disconnect the ignition wire harness connection by pressing on the 2 outside tabs and pulling apart. This harness connection is located by the passenger fender. (Figure 16)



18 Using caution, remove battery ground cable and battery positive cable from the topside of engine. (Figure 17)



19 Remove starter solenoid wire from OEM loom as this will have to be reused. The wire will be rerouted into the new battery cable loom going from battery to the starter. (Figure 18)



20 Clean and prepare all mounting and electrical connection areas using a wire brush/sandpaper (engine block grounds, vehicle frame grounds, battery terminals, electrical terminals). (Figure 19)



21 Feed XDP HD positive battery cable down to the starter along with the removed starter wire from Step 19 (90-degree end is connected at the starter).

22 Secure all connections at starter, starter solenoid wire, and block heater cord. Terminals are not to be touching. Ensure that the power cable is seated flat when tightening to prevent breaking the stud on the starter. (Figure 20)



FIGURE 20

23 Route all positive cables to terminals at batteries. Glow plug power eyelet will need to be drilled larger to fit onto new positive terminal. Main fuse panel (the fuse block under dash) power supply must be drilled at the driver's battery connection.

24 Route all ground connections to their locations (not recommended to connect any grounds to battery at this time). The kit is provided with an extra ground cable if you choose to use. Route clear of steering and any other moving parts



FIGURE 21

25 Carefully tie up all cables to prevent chafing and contact with any moving parts. Revisit all connections and make sure they are tight prior to ground connections at batteries. (Figure 21)