

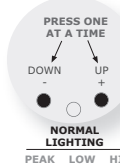
Flow Chart Programming Instructions for : Fuel Pressure 2 1/16"

START HERE

PROGRAM MAIN MENU

(Press one button at a time)

MAIN MENU



NORMAL/DIAL BRIGHTNESS:
Press the down or up button to adjust dial brightness. Press the center button to save and advance to **PEAK PLAYBACK**.



NORMAL/DIAL BRIGHTNESS:
ON POWER UP THE GAUGE READS THE PRESSURE. Press the center button to advance to **PEAK PLAYBACK**.



PEAK PLAYBACK:
Pointer will now display peak playback. Press the center button to advance to **HIGH RED-LINE SETTING**.



PEAK PLAYBACK:
Press the center button to advance to **HIGH RED-LINE SETTING**. OR **OPTION:RESTORE FACTORY DEFAULT**



HIGH RED-LINE SETTING:
Press the down or up button to move dial pointer to the high threshold. Press the center button to save and advance to **LOW THRESHOLD SETTING**.



HIGH RED-LINE SETTING:
Press the center button to advance to **LOW THRESHOLD SETTING**.



LOW THRESHOLD SETTING:
Press the down or up button to move pointer to low threshold. Press the center button to save and advance to **COLOR SCHEME**.



LOW THRESHOLD SETTING:
Press the center button to advance to **COLOR SCHEME**.



COLOR SCHEME:
Press down and up buttons to select a color scheme. (OFF-VIOLET-BLUE-GREEN-YELLOW-ORANGE-RED-WHITE). Press the center button to save and return to **NORMAL/DIAL BRIGHTNESS**.



COLOR SCHEME:
Press the center button to advance to **NORMAL/DIAL BRIGHTNESS**. OR **OPTION A:DEMO MODE** OR **OPTION B:POINTER BRIGHTNESS**

- **CAUTION:** FOLLOW WIRING INSTRUCTION CAREFULLY. INCORRECT RELAY WIRING WILL LEAD TO PREMATURE NITROUS OXIDE ACTIVATION.
- **WARNING:** INSTALLATION MUST BE PERFORMED BY AN EXPERIENCED TECHNICIAN. SYSTEM MUST BE INSTALLED ACCORDING TO MANUFACTURER RECOMMENDATIONS.
- DISCONNECT THE NEGATIVE BATTERY TERMINAL BEFORE INSTALLATION.
- USE CARE WHEN CONNECTING OR DISCONNECTING THE

- WIRING HARNESS. PULL OUT EACH CONNECTOR WHILE PRESSING THE LOCK OF THE CONNECTOR FIRMLY.**
- NEVER DISASSEMBLE, MODIFY OR TAMPER WITH THE UNIT.
 - PROPARTS,LLC IS NOT RESPONSIBLE FOR INCORRECT TURBOCHARGER SIZING, EXCESSIVE EXHAUST PRESSURE, OR INADEQUATE WASTEGATE OPERATION.
 - THIS UNIT IS DESIGNED ONLY FOR DC 12V TYPE VEHICLES WITH NEGATIVE GROUND.
 - CHECK THE AIR/FUEL RATIO ONCE THE BOOST PRESSURE IS

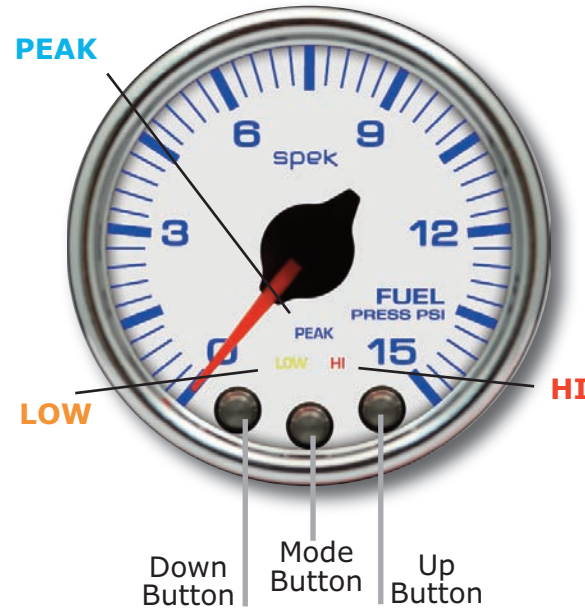
- SET TO PROTECT AGAINST LEAN FUEL SUPPLY THAT COULD CAUSE ENGINE DAMAGE.**
- DO NOT USE BOOST CONTROL IN CONJUNCTION WITH ANY TYPE OF "DRAW THROUGH" FUEL SYSTEM.
 - DO NOT ADJUST THE UNIT WHILE DRIVING.
 - DO NOT USE THIS UNIT UNDER EXTREMELY HOT OR COLD CONDITIONS.
 - DISCONTINUE USE OF THIS PRODUCT IF THE GAUGE DOES NOT OPERATE OR A STRANGE ODOR OR SMOKE IS PRESENT.

Flow Chart Programming Instructions for : Fuel Pressure 2 1/16"

SUBMENU

(ENTER FROM MAIN MENU)

(Press two(2) buttons simultaneously for 5 seconds)



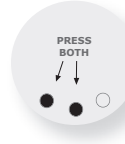
OPTION:RESTORE FACTORY DEFAULT:

While in **PEAK PLAYBACK**, press and hold the center and right buttons for five seconds. Dial pointer will step five times and return to zero. This will erase all user-programmed calibrations and settings, and return to **NORMAL/DIAL BRIGHTNESS**.



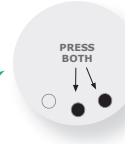
OPTION:SET THRESHOLD ALERT SIGNAL:

THE DIAL FACEPLATE IS PROGRAMMED TO FLASH "RED" WHEN A PROGRAMMED "THRESHOLD SETTING" IS REACHED. THIS SETTING CAN BE "HIGH" OR "LOW" DEPENDING ON THE GAUGE FUNCTION. THAT IS; A TEMPERATURE GAUGE WOULD FLASH "RED" WHEN A HIGH TEMPERATURE SETTING IS REACHED WHILE AN OIL PRESSURE GAUGE WOULD FLASH "RED" WHEN THE LOW PRESSURE SETTING IS REACHED. THIS IS THE DEFAULT OPERATION. THE OPERATOR CAN TURN OFF THIS SIGNAL. WHILE IN THE MAIN MENU, "LOW THRESHOLD SETTING" PRESS AND HOLD THE CENTER AND LEFT BUTTONS FOR 5 SECONDS. THE DIAL POINTER WILL STEP 5 TIMES AND GO TO THE "0" IF THE GAUGE IS PROGRAMMED FOR THRESHOLD ALERT SIGNAL. THIS IS THE DEFAULT CONDITION. THE DIAL POINTER WILL BE AT ABOVE "0" APPROXIMATELY 12:00 O'CLOCK IF THE ALERT SIGNAL IS TURNED OFF. PRESSING THE DOWN BUTTON SELECTS THE ALERT FLASHING FUNCTION. PRESSING THE UP BUTTON DISABLES THE FLASHING FUNCTION. THE SETTING WILL BE CONFIRMED BY THE MOVEMENT OF THE POINTER.



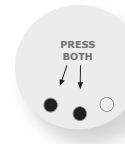
OPTION A:DEMO MODE:

WHILE IN **COLOR SCHEME**, press and hold the center and right buttons for five seconds. Dial will scroll through the seven color schemes. The **HI,LOW** and **PEAK** will light, and the dial pointer will move. Press the center button to return to **NORMAL/DIAL BRIGHTNESS**.



OPTION B:POINTER BRIGHTNESS:

While in **COLOR SCHEME**, press and hold the center and left buttons for five seconds to enter pointer brightness mode. The dial pointer will start to flash and point to the upper right.



OPTION B:POINTER BRIGHTNESS:

Press down and up buttons to adjust the pointer brightness. Press the center button to save and return to **NORMAL/DIAL BRIGHTNESS**.

ProParts, LLC Limited Warranty: ProParts, LLC warrants all merchandise against defects in factory workmanship and material for 12 months from the original purchase date. Proof of purchase is required; otherwise the warranty period shall default to 12 months from date of manufacture as indicated by the date code on the product. This warranty applies to the first retail purchaser and covers only those products exposed to normal use or service. This warranty excludes items used for purpose to which it is not designed, or which has been altered in any way that would be detrimental to the performance or life of the product by misapplication, misuse, negligence or accident. When it is determined by ProParts, LLC after examination that a product is defective, ProParts, LLC will repair, replace

or issue credit for that product through the original selling dealer or by direct basis. In no event shall this warranty exceed the original price of the product. ProParts, LLC assumes no responsibility for diagnosis, removal and/or installation labor, loss of vehicles use, loss of time, inconvenience or any other consequential expense. ProParts, LLC disclaims any liability for consequential damage due to breach of any written or implied warranty on all products manufactured by ProParts, LLC. The purchaser or user of any products distributed, sold or manufactured by ProParts, LLC assumes all risk related to and/or arising from the ownership or use of said product and agrees to indemnify and hold ProParts, LLC harmless from any and all claims brought by any person or entity against ProParts, LLC related to

and/or arising from ownership and/or use of said product. Return goods authorization: Warranty returns will only be accepted by ProParts, LLC when accompanied by a valid return good authorization (rga) number. Product must be received by ProParts, LLC within 30 days of the date the rga is issued. Before a rga can be issued, the installer or end user must contact ProParts, LLC's technical department to discuss the problem. Any out of warranty ProParts, LLC products can be returned for repair. There is a minimum charge of \$50.00 for inspection and diagnosis. ProParts, LLC will provide an estimate of repairs and receive written authorization before repairs are made to the product.

Programming Instructions for : Fuel Pressure 2 1/16" Monitor

SPEK™ MONITOR AND CONTROL

Refer to the "Flow Chart Programming Instructions" while reviewing this guide.

Gauge is field programmable by the operator while installed in the vehicle. This programming is accessed by pressing the control buttons located on the face or the meter dial, **ONE AT A TIME**. The "Down" and "Up" buttons move the pointer to a desired setting or controls the faceplate illumination.



<h3>MAIN MENU</h3> <p>PRESS "MODE" BUTTON TO PROGRAM LEVEL. THEN PRESS BOTH CENTER AND LEFT OR CENTER AND RIGHT BUTTONS FOR FIVE SECONDS TO ENTER SUBMENU</p>	<h3>SUBMENU</h3>
<p>NORMAL/DIAL BRIGHTNESS</p>	
<p>PEAK PLAYBACK</p>	<p>OPTION:RESTORE FACTORY DEFAULT</p>
<p>HIGH RED-LINE SETTING</p>	
<p>LOW THRESHOLD SETTING</p>	
<p>COLOR SCHEME</p>	<p>OPTION A:DEMO MODE OR OPTION B:POINTER BRIGHTNESS</p>

Programming Instructions for : Fuel Pressure 2 1/16" Monitor

PROGRAMMING STARTS IN MAIN MENU

PRESS PROGRAM BUTTON ONE (1) AT A TIME IN THE **MAIN MENU** MODE.

1 **NORMAL/DIAL BRIGHTNESS:**

On power up, the meter usually starts operation in **NORMAL/DIAL BRIGHTNESS**. Gauge reads the sensor value as temperature, pressure, etc. The "Down" and "Up" buttons will control the brightness of the dial lighting. Press the center "Mode" button to save the setting and advance you to **PEAK PLAYBACK**

2 **PEAK PLAYBACK:**

Reads the highest value displayed on the meter since the last time the "**PEAK**" value was displayed. Pressing the "Down" or "Up" control button will control the gauge dial illumination. Press the center "Mode" button to advance to **HIGH RED-LINE SETTING**

3 **HIGH RED-LINE SETTING:**

Sets the point at which "HIGH" warning threshold is reached for that specific gauge. The "Down" and "Up" buttons will move the dial pointer to select **HIGH RED-LINE SETTING**. During normal operation the gauge constantly monitors the sensor value and compares it to the "HIGH" threshold. If the threshold is exceeded, the red "**HI**" indicator is turned on. Press the center "Mode" button to save the setting and advance to **LOW THRESHOLD SETTING**

4 **LOW THRESHOLD SETTING:**

Set the Minimum Threshold: Sets the point at which "**LOW**" warning threshold is reached for that specific gauge. The "Down" and "Up" buttons will move the dial pointer to select the **LOW THRESHOLD SETTING**. During normal operation the gauge constantly monitors the sensor value and compares it to the "**LOW**" threshold. If the sensor value drops below the threshold, the yellow "**LOW**" indicator is turned on. Press the center "Mode" button save the setting and advance to **5 COLOR SCHEME**

5 **COLOR SCHEME:**

Set Faceplate Color Scheme: Operator can select the color of the gauge dial illumination. Each time you press the "Down" control button you scroll through dial color selection until the dial light goes off. Then press the "Up" button to reverse the scroll. Select your dial color illumination by pressing the center "Mode" button to save the setting and advance to **NORMAL/DIAL BRIGHTNESS**

Programming Instructions for : Fuel Pressure 2 1/16" Monitor

SUBMENU

SUBMENU IS ACCESSED THROUGH THE **MAIN MENU**. FIRST GO TO THE APPROPRIATE LEVEL OF THE **MAIN MENU** AND THEN FOLLOW THE INSTRUCTIONS IN THE PROGRAMMING FLOW DIAGRAM TO ENTER THE **SUBMENU**. PRESS THE "MODE" AND "UP" OR "MODE" AND "DOWN" BUTTONS SIMULTANEOUSLY FOR 5 SECONDS TO ENTER THE **SUBMENU** AND ONE BUTTON AT A TIME WHILE IN THAT **SUBMENU**.

OPTION:RESTORE FACTORY DEFAULT: Activation of the Default will erase all field calibration setup settings that are programmed. Factory calibrations will not be affected.

OPTION A:DEMO MODE: Displays the features of the meter. The pointer goes up and down the scale, the dial colors change and the **HI**, **LOW** and **PEAK** warning indicators light. The **DEMO MODE** does not time out. If the gauge is turned off in the **DEMO MODE**, it will start up in the **DEMO MODE**. Press the "Mode" button to return the gauge to **NORMAL** operation.

OPTION B:POINTER BRIGHTNESS MODE: The "Down" and "Up" buttons adjust the dial pointer brightness to blend in with original manufacturer's gauges and the owner's requirements. Press the "Mode" button to return the gauge to **NORMAL/DIAL BRIGHTNESS..**

CRITICAL CONDITION ALERT/OUTPUT SIGNAL: The dial faceplate will flash "**Red**" and an output signal generated when the programmed "Threshold Setting" is reached. This setting can be "**HIGH**" or "**LOW**" depending upon the gauge function. That is; a temperature gauge would flash "**Red**" when a "**HIGH**" temperature setting is reached while an oil pressure gauge would flash "**Red**" when the "**LOW**" pressure setting is reached. The operator can turn off this signal through the gauge program. See the PROGRAMMING FLOW CHART. From the main menu press the center mode button 3 times. The "**LOW**" LED will light.You are now in the "LOW THRESHOLD SETTING."

OPTION: THRESHOLD ALERT SIGNAL: While in "Low Threshold Setting: press and hold the center and left buttons for five seconds. Dial pointer will step five times and then go to zero or the twelve o'clock position. Select alert signal status: The alert signal is deactivated if the pointer is at the twelve o'clock position. Pressing the left button selects alert signal "ON". Pressing the right button selects alert signal "OFF"

Programming Instructions for : Fuel Pressure 2 1/16" Monitor

GAUGE CRITICAL CONDITION ALERT OUTPUT GUIDE

GAUGE TYPE	ALERT FLASHES "RED"
TEMPERATURE	HIGH
PRESSURE	LOW
TACHOMETER	HIGH
PYROMETER	HIGH
NITROUS OXIDE PRESSURE	LOW
BOOST PRESSURE	HIGH
AIR/FUEL	LOW
VOLTMETER	LOW

PROGRAMMING INFORMATION:

- TO RESET THE PROGRAM TO **NORMAL OPERATION** FROM ANY MODE PRESS THE "UP" AND "DOWN" BUTTONS SIMULTANEOUSLY. THIS SOFT RESET CANCELS THE INFORMATION YOU PROGRAMMED IN THAT MODE ONLY AND RETURN YOU TO **NORMAL OPERATION**.
- THE FACEPLATE WILL "FLASH" WHEN BUTTONS ARE DEPRESSED TO ACKNOWLEDGE COMMANDS.
- PROGRAMMING ERRORS WILL BE SIGNALLED BY FLASHING THE FACEPLATE LIGHTING "**PURPLE**", "**BLUE**", "**GREEN**" THEN "**ORANGE**".
- IF PROGRAMMING IS INACTIVE FOR 120 SECONDS THE MODE WILL TIME OUT AND THE GAUGE WILL RETURN TO NORMAL OPERATION, EXCEPT FOR IN THE DEMONSTRATION MODE. THE DEMO MODE WILL NOT TIME OUT UNTIL THE CENTER "MODE" BUTTON IS PRESSED. IF THE GAUGE IS TURNED OFF IN THE DEMO MODE, IT WILL START-UP IN THE DEMO MODE.
- TO RESTORE FACTORY DEFAULTS, PRESS THE "MODE" BUTTON ONCE TO ENTER THE **PEAK PLAYBACK**. THEN PRESS AND HOLD THE "MODE" AND "UP" BUTTONS FOR FIVE SECONDS. YOUR PROGRAMMING WILL BE ERASED BUT FACTORY PROGRAM WILL NOT BE AFFECTED.

Wiring Installation Instructions for : Fuel Pressure 2 1/16" Gauge

SPEK™ FUEL PRESSURE GAUGE

PACKAGE CONTAINS:

- Pressure Gauge
- Pressure Sender
- Wiring Harness
- Mounting Cup
- (2) Neoprene EDPM Grommet

OPTIONAL:

- Option: Output Control Module, Part # 14820

FEATURES:

SPEK PERFORMANCE GAUGE FEATURES:

- INTELLIGENT ELECTRICAL GAUGES.
- GAUGES ARE PROGRAMMED THROUGH COMMAND KEYS ON FACEPLATE.
- STEPPER MOTOR DRIVES THE GAUGE POINTER OVER A 280 DEGREE SWEEP.
- WIDE-ANGLE-DIAL™ HAS A 15% LARGER VIEWING AREA ON A 2 1/16" GAUGE.
- PROGRAMMABLE 7 COLOR DIAL AND **RED** POINTER ILLUMINATION.
- OPTIONAL OUTPUT CONTROL MODULE.

INSTALLATION INSTRUCTIONS:

1 DISCONNECT NEGATIVE (-) BATTERY TERMINAL.

2 VARIOUS MOUNTING SOLUTIONS ARE PRESENTED BY PROPARTS, LLC ON THEIR WEBSITE AT **www.ProPartsLLc.com**

DASH INSTALLATION: SELECT LOCATION IN THE DASH TO MOUNT GAUGE AND CUT A 2 1/16" HOLE. USE A FILE TO INCREASE THE HOLE SIZE IF REQUIRED. BE SURE THERE IS SUFFICIENT ROOM BEHIND THE HOLE FOR THE METER CASE AND THE CONNECTORS YOU WILL USE.

3 IF A SUITABLE HOLE IN THE FIRE WALL IS NOT AVAILABLE, CUT AN 1 1/16 HOLE.

4 TWO Grommet MUST BE CUT TO PERMIT INSTALLATION OF WIRING HARNESS. (SEE **DIAGRAM 1**)

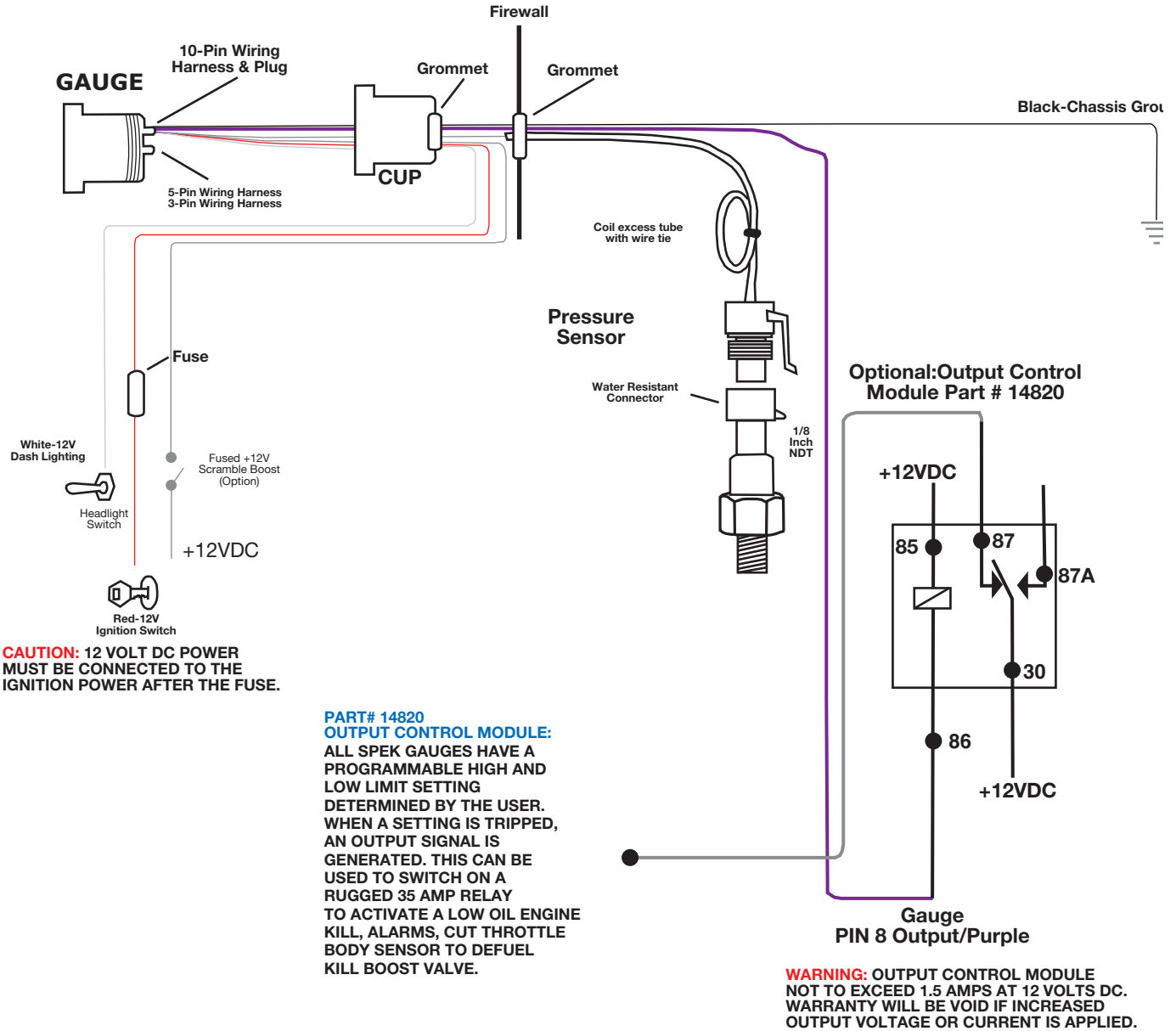
Wiring Installation Instructions for : Fuel Pressure 2 1/16" Gauge

- 5** INSTALL THE TWO (2) GROMMETS AND MOUNTING CUP ON THE WIRING HARNESS AS SHOWN IN **DIAGRAM 1**. ONE GROMMET IS FOR THE HOLE IN THE FIREWALL AND THE SECOND IS FOR THE BACK OF THE GAUGE MOUNTING CUP.
- 6** DO NOT CONNECT WIRING HARNESS TO THE GAUGE UNTIL THE OTHER CONNECTIONS HAVE BEEN MADE AND TESTED.
- 7** SELECT A LOCATION FOR MOUNTING THE SENDER. SENSOR MUST BE IMMERSSED IN FLUID 3-6 MM FOR AN ACCURATE READING. WIRING SHOULD BE SECURED TO A FENDERWELL OR FIREWALL TO INSULATE THE SENDER FROM VIBRATION.
- 8** OIL, DIFFERENTIAL AND TRANSMISSION SENDERS MAY REQUIRE A MOUNTING HOLE BE DRILLED AND A 1/4" NPTF ADAPTER WELDED IN PAN.
- 9** USE TEFLON SEALING COMPOUND. TAPE IS NOT RECOMMENDED.
- 10** TEST ALL FITTINGS FOR LEAKS.
- 11** CONNECT THE **RED** (+12 VOLT SUPPLY) WIRE TO "ON" CIRCUIT THAT GETS POWER WHEN THE IGNITION IS TURNED ON. THIS CIRCUIT MUST BE FUSED BEFORE THE IGNITION SWITCH (1 AMP, 3 AG FAST ACTING LITTLEFUSE® #312001 OR EQUIVALENT).
- 12** CONNECT THE **BLACK** WIRE TO A GOOD GROUNDING POINT ON THE CAR'S CHASSIS.
- 13** CONNECT THE **WHITE** WIRE TO THE DIMMER VOLTAGE GOING TO THE DASH LIGHTS. THIS WILL CAUSE THE METER BRIGHTNESS TO TRACK THE BRIGHTNESS OF THE REST OF THE INDICATORS.
- 14** PLUG THE SENDER WIRING HARNESS INTO THE PACKARD FITTING ON THE SENSOR.
- 15** PLUG THE WIRING HARNESS INTO THE GAUGE AND MOUNT IN POD OR DASH. USE CARE WHEN CONNECTING OR DISCONNECTING THE WIRING HARNESS. PULL OUT EACH PACKARD FITTING CONNECTOR WHILE PRESSING THE LOCK OF THE CONNECTOR FIRMLY.
- 16** FOR A DASH MOUNT, ATTACH THE MOUNTING CUP OVER THE BACK OF THE GAUGE AND HAND TIGHTEN. DO NOT OVER TIGHTEN.
- 17** POWER UP THE GAUGE AND INSPECT ALL CONNECTIONS. IF GAUGE IS OPERATING NORMAL, PROCEED TO "PROGRAMMING MANUAL."

TROUBLESHOOTING:

- 1** THE GAUGE FACEPLATE WILL FLASH ALTERNATELY "**RED**" THEN "**GREEN**" IF THE SENSOR PROBE IS NOT CONNECTED TO THE WIRING HARNESS.
- 2** DO NOT USE ANY SENDER ADAPTER THAT WOULD REDUCE THE SENSORS IMMERSION IN FLUID. FOR ACCURACY, SENSOR SHOULD BE 3-6MM IMMERSSED IN THE FLUID IT IS MONITORING.

Wiring Installation Instructions for : Fuel Pressure 2 1/16" Gauge

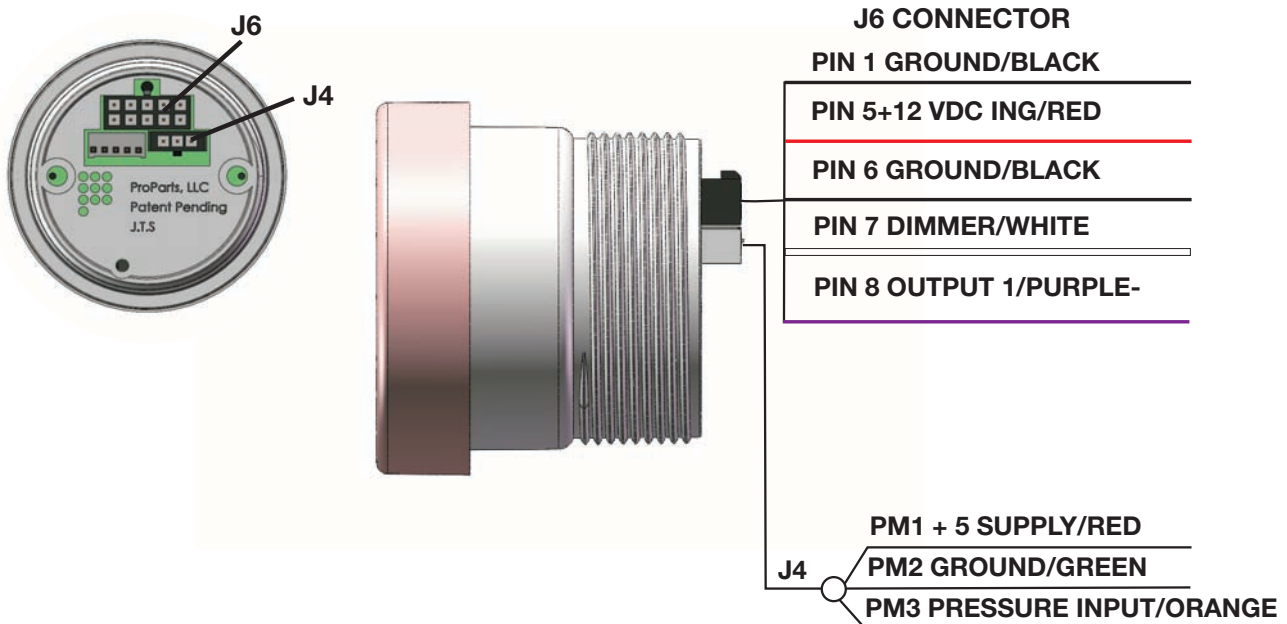


Wiring Installation Instructions for : Fuel Pressure 2 1/16" Gauge

- **CAUTION:** FOLLOW WIRING INSTRUCTIONS CAREFULLY. INCORRECT RELAY WIRING MAY LEAD TO PREMATURE N2O VALVE ACTIVATION.
- **WARNING:** INSTALLATION MUST BE PERFORMED BY AN EXPERIENCED TECHNICIAN. INSTALLER MUST WEAR SAFETY GLASSES. SYSTEM MUST BE INSTALLED ACCORDING TO MANUFACTURERS RECOMMENDATIONS.
- DISCONNECT THE NEGATIVE BATTERY TERMINAL BEFORE INSTALLATION.
- USE CARE WHEN CONNECTING OR DISCONNECTING THE WIRING HARNESS. PULL OUT EACH CONNECTOR WHILE PRESSING THE LOCK OF THE CONNECTOR FIRMLY.
- NEVER DISASSEMBLE, MODIFY OR TAMPER WITH THE GAUGE.
- PROPARTS LLC, IS NOT RESPONSIBLE FOR INCORRECT INSTALLATION OR PROGRAMMING OF THE SPEK™ TACHOMETER WITH NITROUS OXIDE CONTROLLER.
- THIS UNIT IS DESIGNED ONLY FOR DC12V TYPE VEHICLES WITH NEGATIVE GROUND.
- CHECK LEAN FUEL SUPPLY THAT COULD CAUSE ENGINE DAMAGE.
- DO NOT ENGAGE YOUR NITROUS SYSTEM WITH THE ENGINE OFF. SEVERE ENGINE DAMAGE COULD OCCUR.
- DO NOT ADJUST THE UNIT WHILE DRIVING. OBEY ALL OF THE RULES AND REGULATIONS OF HIGHWAY DRIVING.
- DO NOT USE THIS UNIT UNDER EXTREMELY HOT OR COLD CONDITIONS.
- DISCONTINUE USE OF THIS PRODUCT IF THE GAUGE DOES NOT OPERATE OR IF A STRANGE ODOR OR SMOKE IS PRESENT.

DIAGRAM 2

WIRING FOR 2 1/16" SPEK PRESSURE GAUGE



Wiring Installation Instructions for : Fuel Pressure 2 1/16" Gauge

ProParts, LLC Limited Warranty:

ProParts, LLC warrants all merchandise against defects in factory workmanship and material for 12 months from date of original purchase. Proof of purchase is required: otherwise the warranty period shall default to 12 months from date of manufacture as indicated by the date code on the product. This warranty applies to the first retail purchaser and covers only those products exposed to normal use or service. This warranty excludes items used for a purpose for which it is not designed, or which has been altered in any way that would be detrimental to the performance or life of the product or misapplication, misuse, negligence or accident. When it is determined by ProParts, LLC after examination that a product is defective, ProParts, LLC will repair, replace or issues credit for any defective product through the original selling dealer or on a direct bases. In no event shall this warranty exceed the original price of the product. ProParts, LLC assumes no responsibility for diagnosis, removal and/ or installation labor, loss of vehicles use, loss of time, inconvenience or any other consequential expense. ProParts, LLC disclaims any liability for consequential damages due to breach of any written or implied warranty on all products manufactured by ProParts LLC. Warranty is valid only for original purchaser and is not transferable. This Warranty gives you specific legal rights, and may also have other rights which may vary from state to state. Customer agrees to insure the Product or assume the risk of loss or damage in transit, to prepay shipping charges to ProParts, and to use the original shipping container or equivalent.

Important Disclaimer:

This product may not be lawful for use on public roadway. No warranty is made or implied regarding the legality of offered products when they are installed in a motor vehicle in any particular state, province or municipality. It is the user's responsibility to determine the legality of any automotive alterations made in connection to products made by, obtained from or distributed by ProParts, LLC.

The purchaser or user of any products, sold or manufactured by ProParts, LLC assumes all risk related to and/ or arising from the ownership or use of said product and agrees to indemnify and hold ProParts, LLC harmless from any and all claims brought by any person or entity against ProParts, LLC related to and/or arising from ownership and/or use of said products.

Return Goods Authorization:

Warranty returns will only be accepted by ProParts, LLC when accompanied by a valid Return Goods Authorization (RGA) number. Products must be received by ProParts, LLC within 30 days of the date the RGA is issued. Before a RGA can be issued, the installer or end user must contact ProParts, LLC Technical Department to discuss the problem. Any out of warranty ProParts, LLC products can be returned for repair. There is a minimum charge of \$50.00 dollars for inspection and diagnosis. ProParts, LLC will provide an estimate of repairs and receive written authorization before repairs are made to the product.

Disclaimer:

Performance products are designed to increase engine power and create stress not engineered by the Original Equipment Manufacture (OEM). This could result in damage to the engine and related systems. Purchaser uses this product at his own risk. ProParts, LLC, its agents, employees, and owners shall not be under any liability whether or not resulting from any negligence or content of information supplied for any damage or loss resulting from this information.

Non-Warranty Repair/Retest

Products returned due to damage or misuse and Product retested with no problem found are subject to repair/retest charges. A purchase order or credit card number and authorization must be provided in order to obtain an RMA (Return Merchandise Authorization) number prior to returning product.