



2023

PARTS CATALOG

WHAT'S INSIDE

- 4-5** X220 / X260 HEAD STUDS
- 6-7** XPRESSOR OE SERIES TURBOCHARGERS
- 8-9** FUEL SYSTEM COMPONENTS
- 10-11** OER SERIES / REMANUFACTURED FUEL INJECTORS
- 12-13** X-TRA COOL RADIATORS
- 14-15** HD GEAR REDUCTION STARTERS
- 16-17** HD HIGH OUTPUT ALTERNATORS
- 18-19** CHARGING SYSTEM / SHOP EQUIPMENT
- 20-25** PARTS & ACCESSORIES FOR FORD TRUCKS
- 26-29** PARTS & ACCESSORIES FOR DODGE/RAM TRUCKS
- 30-33** PARTS & ACCESSORIES FOR CHEVY/GMC TRUCKS
- 34-35** XDP ADDITIVES
- 36-37** UNIVERSAL PARTS

Don't see what you're looking for?
Speak with your trusted XDP Authorized Dealer to shop
thousands of parts and accessories for your diesel truck.

From direct fit OE replacement to top quality aftermarket parts and accessories, we know what powers you! Whether you're looking for diesel fuel injectors, a starter, alternator, or replacement turbocharger, XDP has what you need at the best price guaranteed, with FREE SHIPPING over \$99.00!



ONE YEAR PARTS GUARANTEE

All XDP parts carry a 1-Year Warranty against defects in materials and craftsmanship. Visit xdp.com for details.

NOTE: Products marked with an asterisk (*) are not available for sale in the state of California.

X220 / X260 SERIES HEAD STUDS

OEM bolts are not designed or equipped to handle the additional pressure from high-performance applications, and on some engines they can be problematic, even in stock applications. This increased pressure can result in the cylinder head lifting and causing a failed or “blown” head gasket. To avoid head gasket failures, upgrading to studs is recommended to keep the cylinder heads securely in place. XDP head studs are constructed from high-quality 8740 Chromoly Steel and incorporate a proprietary element for superior strength and durability. After heat-treating, threads are rolled to deliver maximum fatigue strength. X220 studs are rated at 225,000+ psi tensile strength and 205,000+ psi yield strength, while the X260 studs are rated at 260,000+ psi.

In addition to increased strength, replacing head bolts with studs allows for precise torque reading. Conventional bolts can twist when tightened, reacting to two different forces simultaneously. Studs apply force on the vertical axis, resulting in a more even clamping force. Studs also help provide proper alignment of cylinder heads during engine assembly. X220 and X260 Series Studs are manufactured in an ISO/TS 16949 quality control facility.



X220 SERIES
XD3001HS
2003-2007 FORD 6.0L POWERSTROKE



XD3004HS
2008-2010 FORD 6.4L POWERSTROKE



XD3006HS
2001-2016 GM 6.6L DURAMAX



XD3010HS
1998.5-2023 DODGE RAM 5.9/6.7L DIESEL

X220 SERIES



XD3013HS
1994-2003 FORD 7.3L POWERSTROKE



XD3014HS
1989-1998 DODGE 5.9L DIESEL



XD3018HS
2011-2023 FORD 6.7L POWERSTROKE

X260 SERIES



XD3002HS
2003-2007 FORD 6.0L POWERSTROKE



XD3009HS
2001-2016 GM 6.6L DURAMAX



XD3011HS
1998.5-2023 DODGE RAM 5.9/6.7L DIESEL



INNER ROW HEAD BOLT KIT
XD3020HB // 2003-2007 FORD 6.0L POWERSTROKE



THREAD CHASERS
XD40128TC // M8 X 1.25
XD40124TC // M12 X 1.5
XD40125TC // M12 X 1.75
XD40126TC // M14 X 2.0
XD40127TC // M16 X 2.0



XTRA SLICK FASTENER ASSEMBLY LUBRICANT
XD541 // UNIVERSAL - 4 OZ. BOTTLE



SPECIFICATIONS

- » Performance verified to meet OE specifications
 - » 100% end-of-line tested through full RPM range
 - » VGT/VNT function tested for proper operation
 - » Noise, Vibration, Harshness (NVH) analyzed
 - » Burst tested & hot gas stand validated
 - » Certified to IATF 16949 standards
 - » Leak tested for both oil & air
- Remanufactured Units:
- » All wear components & fasteners replaced
 - » Thrust bearing, journal bearing & oil slinger replacement
 - » Bearing surfaces precision machined to like-new condition

	PART #	DESCRIPTION	FITMENT	NEW/ REMAN	CROSS REF. # MODEL #
FORD	XD564	XDП New Direct Replacement Turbocharger	1999 Ford 7.3L Powerstroke (Early Model)	NEW	702650-0001 GTP38
	XD582	XDП Turbo Pedestal	1999 Ford 7.3L Powerstroke (Early Model)	NEW	451747-0014
	XD563	XDП New Direct Replacement Turbocharger	1999.5-2003 Ford 7.3L Powerstroke	NEW	702011-0011 GTP38
	XD581	XDП Turbo Pedestal	1999.5-2003 Ford 7.3L Powerstroke	NEW	701803-0006
	XD552	XDП Remanufactured Direct Replacement Turbocharger	2003 Ford 6.0L Powerstroke	REMAN	725390-9002 GT3782VA
	XD551	XDП Remanufactured Direct Replacement Turbocharger	2004-2005 Ford 6.0L Powerstroke	REMAN	743250-9004 GT3782VA
	XD550	XDП Remanufactured Direct Replacement Turbocharger	2005.5-2007 Ford 6.0L Powerstroke	REMAN	743250-9005 GT3782VA
	XD567	XDП New Direct Replacement High Pressure Turbocharger	2008-2010 Ford 6.4L Powerstroke	NEW	176466 V2S
	XD568	XDП New Direct Replacement Low Pressure Turbocharger	2008-2010 Ford 6.4L Powerstroke	NEW	177100 V2S
	XD575	XDП New Complete Turbochargers (High & Low Pressure)	2008-2010 Ford 6.4L Powerstroke	NEW	176013 V2S
GMC / CHEVROLET	XD558	XDП New Direct Replacement Turbocharger	1996-2002 GM 6.5L Diesel (GM4,GM5,GM8)	NEW	12533738 IHI RHC-5/8
	XD559	XDП New Direct Replacement Turbocharger	1996-2002 GM 6.5L Diesel 1996-2002 HMMWV (GM6)	NEW	12530339 IHI RHC-6
	XD557	XDП New Direct Replacement Turbocharger*	2001-2004 GM 6.6L Duramax LB7	NEW	12530339 IHI RHG6
	XD553	XDП Remanufactured Direct Replacement Turbocharger	2004.5-2005 GM 6.6L Duramax LLY	REMAN	736554-9011 GT3788VA
	XD554	XDП Remanufactured Direct Replacement Turbocharger	2006-2007 GM 6.6L Duramax LBZ	REMAN	759622-9005 GT3788VA
	XD555	XDП Remanufactured Direct Replacement Turbocharger	2007.5-2010 GM 6.6L Duramax LMM	REMAN	790032-9003 GT3788VA
	XD556	XDП Remanufactured Direct Replacement Turbocharger	2011-2016 GM 6.6L Duramax LML	REMAN	848212-5002S GT3788VA
	XD576	XDП New Direct Replacement Turbocharger	1994-1995 Dodge 5.9L Diesel	NEW	3539911 HX35W
DODGE / RAM	XD562	XDП New Direct Replacement Turbocharger	1996-1998 Dodge 5.9L Diesel	NEW	3539389 HX35W
	XD577	XDП New Direct Replacement Turbocharger*	1996-1998 Dodge 5.9L Diesel	NEW	3539373 HX35W
	XD578	XDП New Direct Replacement Turbocharger	1998.5-2000 Dodge 5.9L Diesel (Must Verify OE Turbo Part# With Cross Reference)	NEW	3539343 HX35W
	XD579	XDП New Direct Replacement Turbocharger	1999-2000 Dodge 5.9L Diesel (Must Verify OE Turbo Part# With Cross Reference)	NEW	3590104 HX35W
	XD580	XDП New Direct Replacement Turbocharger	1999-2002 Dodge 5.9L Diesel (Must Verify OE Turbo Part# With Cross Reference)	NEW	3592766 HX35W
	XD561	XDП New Direct Replacement Turbocharger	2000-2002 Dodge 5.9L Diesel (Automatic Transmission - HY35W)	NEW	3592811 HY35W
	XD560	XDП New Direct Replacement Turbocharger	2004.5-2007 Dodge 5.9L Diesel	NEW	4043600 HE351CW
	XD571	XDП New Direct Replacement Turbocharger	2007.5-2012 Dodge Ram 6.7L Diesel	NEW	3770973 HE351VE
	XD572	XDП New Direct Replacement Turbocharger With Actuator	2007.5-2012 Dodge Ram 6.7L Diesel	NEW	3770973 HE351VE
	XD573	XDП New Direct Replacement Turbocharger	2013-2018 Ram 6.7L Diesel	NEW	3787604 HE300VG
	XD574	XDП New Direct Replacement Turbocharger With Actuator	2013-2018 Ram 6.7L Diesel	NEW	3787604 HE300VG
	XD566	XDП New Direct Replacement Turbocharger	2000-2004 Sprinter 2500/3500 2.7L	NEW	709838-0001 GTA2256V
SPRINTER	XD565	XDП New Direct Replacement Turbocharger	2004-2006 Sprinter 2500/3500 2.7L	NEW	736088-0003 GTA2256VK
	XD569	XDП New Direct Replacement Turbocharger	2007-2009 Sprinter 2500/3500 3.0L 2007-2008 Jeep Grand Cherokee 3.0L	NEW	761154-0004 GT2056V
	XD570	XDП New Direct Replacement Turbocharger	2010-2018 Sprinter 2500/3500 3.0L OM642	NEW	777318-0001 GTB2056VK

FUEL CONTAMINATION KITS

Repair the fuel system on your vehicle with an XDP Fuel Contamination Kit. A failed high-pressure injection pump or a bad tank of fuel can destroy your entire fuel system. Fuel contamination can come from many other sources as well, such as an accidental fill of gasoline or DEF, water contamination, or fuel that has been improperly stored. In these instances, a simple fuel system flush is not enough to remove the contaminants. In many applications it's often necessary to replace all the components to ensure that you're getting a complete repair.

The XDP Fuel Contamination Kit includes a CP3 or CP4 pump (depending on application) and a fuel injector set that is remanufactured using the most recent OE specifications. In addition, this kit contains the necessary components to replace your entire fuel system, such as a new fuel rail or rails, fuel injector lines, fuel injector connector tubes (where applicable), and necessary gaskets for installation (components depend on application).



XDP514
2011-2014 FORD 6.7L POWERSTROKE



XDP515
2015-2016 FORD 6.7L POWERSTROKE



XDP516
2017-2019 FORD 6.7L POWERSTROKE



XDP517
2011-2016 GM 6.6L DURAMAX LML



XDP518
2011-2016 GM 6.6L DURAMAX LGH



XDP529
2013-2018 RAM 6.7L DIESEL 2500/3500

FUEL RAIL ASSEMBLIES

Replace the fuel rail on your vehicle with an XDP Fuel Rail Assembly. If debris from a failed CP4 high-pressure pump, or other contaminants have entered your fuel system, it is recommended that you replace the fuel rail or rails (depending on application). This helps eliminate the contamination risk of the new fuel system components such as your fuel injectors. Each fuel rail is manufactured to OE specifications and comes ready for installation on your engine.



XDP600
2003-2007 DODGE 5.9L DIESEL



XDP601
2007.5-2012 DODGE RAM 6.7L DIESEL



XDP602
2013-2018 RAM 6.7L DIESEL



XDP603
2011-2019 FORD 6.7L POWERSTROKE
DRIVER SIDE



XDP604
2011-2019 FORD 6.7L POWERSTROKE
PASSENGER SIDE



XDP605
2011-2016 GM 6.6L DURAMAX LML/LGH
DRIVER SIDE



XDP606
2011-2016 GM 6.6L DURAMAX LML/LGH
PASSENGER SIDE

FUEL INJECTION PUMPS

A properly functioning fuel injection pump is critical to proper engine function. If a pump is damaged or underperforming it can rob your engine of power and in some cases cause poor running conditions or even a no-start/hard starts. These factory-style replacement pumps are remanufactured to meet stringent OE-specifications and are designed to restore your fuel system and ensure everything is running smoothly. Whether your vehicle needs a CP3 or CP4 high-pressure pump, or a VP44 Fuel Injection Pump, you can be sure that XDP has the high-quality replacement your vehicle needs.



CP3
XDP520
2003-2007 DODGE 5.9L DIESEL



CP3
XDP521
2001-2004 GM 6.6L DURAMAX



CP3
XDP522
2004.5-2005 GM 6.6L DURAMAX



CP3
XDP523
2006-2010 GM 6.6L DURAMAX



CP3
XDP598
2007.5-2018 RAM 6.7L DIESEL



CP4
XDP524
2011-2014 FORD 6.7L POWERSTROKE



CP4
XDP525
2015-2019 FORD 6.7L POWERSTROKE



VP44
XDIPVR15X
1998.5-2002 5.9L DIESEL AUTO 6 5-SPEED (STANDARD OUTPUT 235HP)

XDIPVR17X
2000-2002 5.9L DIESEL 6-SPEED (HIGH OUTPUT 245HP)



OER SERIES / REMAN FUEL INJECTORS

Fuel injectors are one of the most critical components in a modern diesel engine. Over time fuel injectors can wear or fail due to age, fuel contamination, and several other factors. XDP offers a wide range of new OER Series and remanufactured OE-style replacement fuel injectors for Dodge/Ram, GM, and Ford diesel engines. All injectors are designed to meet factory specifications including flow characteristics and horsepower rating. XDP fuel injectors are built to stringent standards and undergo advanced end-of-line testing for fuel delivery, leakage, and opening characteristics.

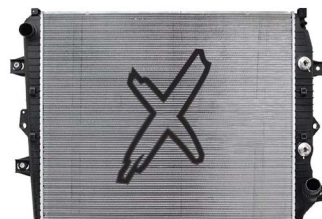
			PART #	DESCRIPTION	FITMENT
FORD			XD472	XDP Remanufactured 7.3L AA Fuel Injector	1994-1997 Ford 7.3L Powerstroke
			XD473	XDP Remanufactured 7.3L AB Fuel Injector	1997 Ford 7.3L Powerstroke (California Models) 1999 Ford 7.3L Powerstroke (Early Models)
			XD474	XDP Remanufactured 7.3L AD Fuel Injector	1999.5-2003 Ford 7.3L Powerstroke
			XD475	XDP Remanufactured 7.3L AE Fuel Injector	1999.5-2003 Ford 7.3L Powerstroke (#8 Long Lead)
			XD470	XDP Remanufactured 6.0L Fuel Injector	2003-2004 Ford 6.0L Powerstroke
			XD471	XDP Remanufactured 6.0L Fuel Injector	2004.5-2007 Ford 6.0L Powerstroke
			XD485	XDP Remanufactured 6.4 Fuel Injector	2008-2010 Ford 6.4L Powerstroke
			XD481	XDP Reman 6.7 Fuel Injector With Bolt & Line (Cylinders 3-4-5-6)	2011-2014 Ford 6.7L Powerstroke
			XD489	XDP Reman 6.7 Fuel Injector With Bolt & Line (Cylinders 1-2-7-8)	2011-2014 Ford 6.7L Powerstroke
			XD490	XDP Reman 6.7 Fuel Injector With Bolt & Line (Cylinders 3-4-5-6)	2015-2019 Ford 6.7L Powerstroke
			XD491	XDP Reman 6.7 Fuel Injector With Bolt & Line (Cylinders 1-2-7-8)	2015-2019 Ford 6.7L Powerstroke
GMC / CHEVROLET			XD488	XDP Remanufactured LB7 Fuel Injector	2001-2004 GM 6.6L Duramax LB7
			XD594	XDP OER Series Fuel Injector Line (Cylinders 1 & 8)	2001-2004 GM 6.6L Duramax LB7
			XD595	XDP OER Series Fuel Injector Line (Cylinders 3 & 6)	2001-2004 GM 6.6L Duramax LB7
			XD596	XDP OER Series Fuel Injector Line (Cylinders 4 & 5)	2001-2004 GM 6.6L Duramax LB7
			XD597	XDP OER Series Fuel Injector Line (Cylinders 2 & 7)	2001-2004 GM 6.6L Duramax LB7
			XD494	XDP Remanufactured LLY Fuel Injector	2004.5-2005 GM 6.6L Duramax LLY
			XD493	XDP Remanufactured LBZ Fuel Injector	2006-2007 GM 6.6L Duramax LBZ
			XD492	XDP Remanufactured LMM Fuel Injector	2007.5-2010 GM 6.6L Duramax LMM
			XD482	XDP Remanufactured LGH Fuel Injector With Bolt	2011-2016 GM 6.6L Duramax LGH
			XD487	XDP Remanufactured LML Fuel Injector With Bolt	2011-2016 GM 6.6L Duramax LML
DODGE / RAM			XD499	XDP OER Series New Fuel Injector	1994-1995 Dodge 5.9L Diesel (Automatic Transmission)
			XD498	XDP OER Series New Fuel Injector	1996-1998 Dodge 5.9L Diesel 180HP (Automatic Transmission) 1994-1995 Dodge 5.9L Diesel 175HP (Manual Transmission)
			XD590	XDP OER Series New Fuel Injector	1996-1998 Dodge 5.9L Diesel 215HP (Manual Transmission)
			XD527	XDP OER Series Fuel Injector Connector Tube	1998.5-2002 Dodge 5.9L Diesel
			XD593	XDP OER Series New Fuel Injector	1998.5-2002 Dodge 5.9L Diesel 235HP (5-Speed Manual Transmission)
			XD592	XDP OER Series New Fuel Injector	1998.5-2002 Dodge 5.9L Diesel 235HP (Automatic Transmission)
			XD536	XDP Black-Phosphate Fuel Injector Hold Down Bolts	1998.5-2022 Dodge Ram 5.9L/6.7L Diesel
			XD591	XDP OER Series New Fuel Injector	2001-2002 Dodge 5.9L Diesel 245HP (6-Speed Manual Transmission)
			XD480	XDP OER Series Remanufactured Fuel Injector	2003-2004 Dodge 5.9L Diesel
			XD526	XDP OER Series Fuel Injector Connector Tube	2003-2007 Dodge 5.9L Diesel
			XD486	XDP Remanufactured Fuel Injector	2004.5-2007 Dodge 5.9L Diesel
			XD496	XDP OER Series Remanufactured Fuel Injector	2007.5-2010 Dodge Ram 6.7L Diesel (Cab & Chassis)
			XD495	XDP OER Series Remanufactured Fuel Injector	2007.5-2012 Dodge Ram 6.7L Diesel (2500/3500 Pickup)
			XD528	XDP OER Series Fuel Injector Connector Tube	2007.5-2022 Dodge Ram 6.7L Diesel
			XD497	XDP OER Series Remanufactured Fuel Injector	2010-2012 Ram 6.7L Diesel (Cab & Chassis)
			XD484	XDP OER Series Remanufactured Fuel Injector	2013-2018 Ram 6.7L Diesel (2500/3500 Pickup)
			XD483	XDP OER Series Remanufactured Fuel Injector	2013-2018 Ram 6.7L Diesel (Cab & Chassis)



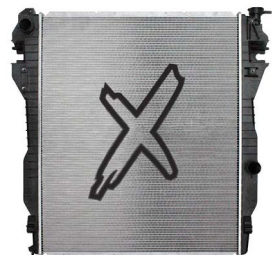
XDP290
2008-2010 FORD 6.4L POWERSTROKE



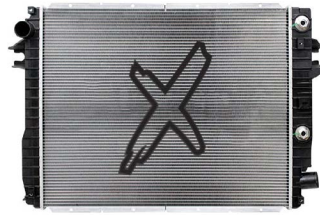
XDP291
2011-2016 FORD 6.7L POWERSTROKE



XDP292
2011-2016 GM 6.6L DURAMAX LML



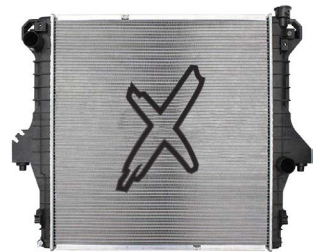
XDP293
2010-2012 RAM 6.7L DIESEL



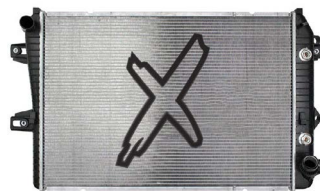
XDP294
2013-2018 RAM 6.7L DIESEL



XDP295
2001-2005 GM 6.6L DURAMAX LB7/LLY



XDP296
2003-2009 DODGE 5.9L/6.7L DIESEL



XDP297
2006-2010 GM 6.6L DURAMAX LBZ/LMM



XDP299
2011-2016 FORD 6.7L POWERSTROKE (SECONDARY)



XDP461
1994-2002 DODGE 5.9L DIESEL



XDP463
2017-2022 FORD 6.7L POWERSTROKE



XDP466
2013-2015 RAM 6.7L DIESEL (SECONDARY)



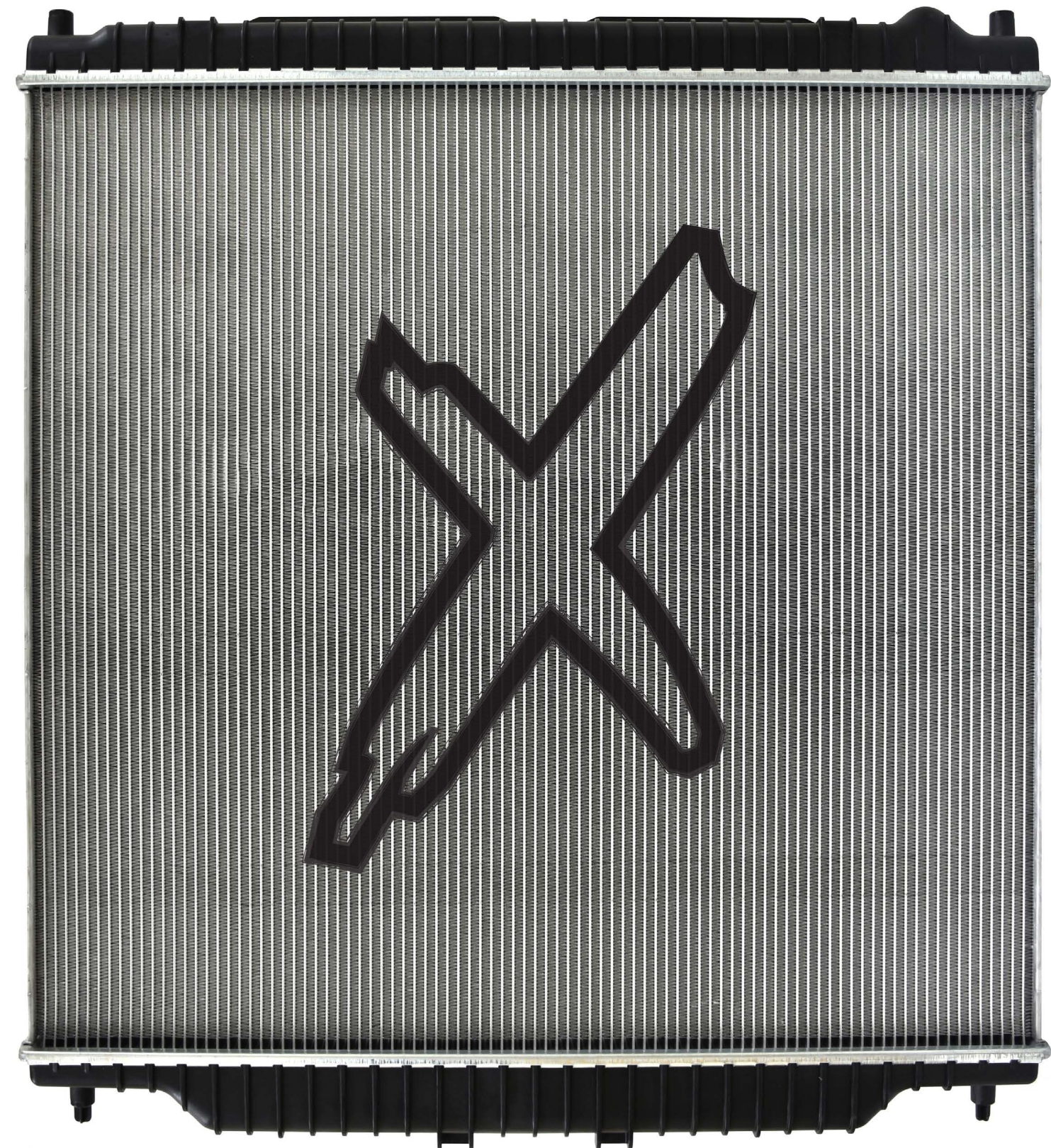
XDP467
2017-2020 FORD 6.7L POWERSTROKE (SECONDARY)



XDP468
1995-1997 FORD 7.3L POWERSTROKE



XDP538
1999-2003 FORD 7.3L POWERSTROKE



XDP298
2003-2007 FORD 6.0L POWERSTROKE (AUTOMATIC)

X-TRA COOL RADIATORS

Don't just reinstall a factory radiator in your diesel, upgrade it with an XDP X-TRA Cool Direct-Fit Replacement Radiator. XDP's X-TRA Cool Radiators may look like a factory replacement, but are far from it. Built for greater durability, X-TRA Cool Radiators are made using techniques borrowed from the HD and semi-truck industry to maximize cooling efficiency and strength while still giving you the best value. X-TRA Cool Radiators use a high-efficiency core to maximize cooling potential. With more fins per inch and heavy-duty tubes, X-TRA Cool Radiators increase cooling efficiency over your stock radiator.

XDP HD STARTERS

You can rely on the XDP Wrinkle Black Gear Reduction Starter to get your diesel pickup running in the most extreme environments. XDP's Gear Reduction Starters are faster, stronger, and more durable than your factory starter. This gives you the ability to turn over even the most aggressive diesel engines.

XDP's Gear Reduction Starters feature a smaller motor that is faster, more efficient, and draws less amperage. The Gear Reduction Design produces more torque than a factory unit, at about a third of the size. This not only reduces weight, but also makes a more compact design for easier installation. Each starter comes pre-tested, ready for installation, and features a durable "Wrinkle Black" finish for corrosion resistance and aesthetics.

- » Gear reduction design
- » Wrinkle black finish
- » Increased durability



XD250
1982-2000 GM 6.2L/6.5L DIESEL



XD251
2001-2019 GM 6.6L DURAMAX
XD533 // BLACK-PHOSPHATE STARTER BOLT KIT



XD253
1994-2003 FORD 7.3L POWERSTROKE



XD254
2011-2021 FORD 6.7L POWERSTROKE



XD255
2003-2007 FORD 6.0L POWERSTROKE
XD532 // BLACK-PHOSPHATE STARTER BOLT KIT



XD256
2008-2010 FORD 6.4L POWERSTROKE
XD532 // BLACK-PHOSPHATE STARTER BOLT KIT



XD257
1994-2002 DODGE 5.9L DIESEL
XD535 // BLACK-PHOSPHATE STARTER BOLT KIT



XD258
2003-2006 DODGE 5.9L DIESEL
XD535 // BLACK-PHOSPHATE STARTER BOLT KIT



XD259
2007-2022 DODGE 5.9L/6.7L DIESEL
XD534 // BLACK-PHOSPHATE STARTER BOLT KIT (2007.5+)



XD348
2003-2005 FORD 6.0L POWERSTROKE



XD349
2006-2007 FORD 6.0L POWERSTROKE



XD350
2011-2019 GM 6.6L DURAMAX LML/L5P



XD351
2007.5-2010 GM 6.6L DURAMAX LMM



XD352
2011-2022 FORD 6.7L POWERSTROKE



XD353
2008-2010 FORD 6.4L POWERSTROKE



XD354
2007.5-2023 DODGE 6.7L DIESEL



XD355
2001-2007 GM 6.6L DURAMAX



XD356
1999-2003 FORD 7.3L POWERSTROKE



XD357
1994-1997 FORD 7.3L POWERSTROKE



XD358
2003-2007 FORD 6.0L POWERSTROKE
(SECONDARY)



XD510
1990-1998.5 DODGE 5.9L DIESEL



XD511
1999-2002 DODGE 5.9L DIESEL



XD512
2003-2007 DODGE 5.9L DIESEL



HD HIGH OUTPUT ALTERNATORS

Enhance the charging system in your diesel with an XDP Wrinkle Black HD High Output Alternator. While many diesel owners upgrade their truck for performance, the charging system is often overlooked until there is an issue. Aftermarket accessories such as off-road lights, aftermarket air horn kits, on-board air compressors, snowplows, stereo equipment, and other electronics will overload your factory charging system and demand more than what the factory alternator can provide.

The XDP HD Series High Output Alternator increases the output of your factory charging system, giving you the ability to reliably run your high-draw electronics while alleviating the strain on your charging system. The XDP HD Series Alternator features an ultra-durable wrinkle black coating for corrosion resistance and enhanced appearance. Each unit comes pre-tested and ready for installation utilizing your factory belt, mounting locations, and electrical connections.



BATTERY HOLD DOWNS



XD418
2011-2022 FORD 6.7L POWERSTROKE
ANODIZED BLACK



XD419
2011-2022 FORD 6.7L POWERSTROKE
POLISHED

HD REPLACEMENT BATTERY CABLES



XD420
1994-1997 FORD 7.3L POWERSTROKE

XD423
2017-2021 FORD 6.7L POWERSTROKE

XD428
1999-2003 FORD 7.3L POWERSTROKE

XD429
2008-2010 FORD 6.4L POWERSTROKE

XD432
2003-2007 FORD 6.0L POWERSTROKE



XD437
1994-1998 DODGE 5.9L DIESEL

XD439
1998.5-2002 DODGE 5.9L DIESEL

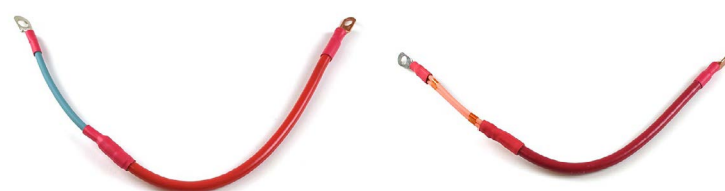
XD441
2003-2007 DODGE 5.9L DIESEL

XD445
2007.5-2009 DODGE 6.7L DIESEL

XD447
2010-2018 DODGE 6.7L DIESEL

XD449
1989-1993 DODGE 5.9L DIESEL

ALTERNATOR CABLES



XD421
2003-2007 DODGE 5.9L DIESEL
(FOR USE WITH STOCK ALTERNATOR)

XD422
2003-2007 DODGE 5.9L DIESEL
(FOR USE WITH 180 AMP ALTERNATOR & LARGER)



XD425
2003-2007 FORD 6.0L POWERSTROKE
(FOR USE WITH STOCK ALTERNATOR)

XD426
2003-2007 FORD 6.0 POWERSTROKE
(FOR USE WITH HIGH-OUTPUT ALTERNATOR)



XD372
CUSTOM XDP FENDER COVER

XD395
LOW-PROFILE CREEPER



PARTS & ACCESSORIES FOR FORD TRUCKS



OER+ 6.7L INTERCOOLER PIPE UPGRADE*

XD364 // 2017-2021 FORD 6.7L POWERSTROKE

- » Replaces common failure-prone factory part
- » No aftermarket tuning required
- » 3" Mandrel-bent tubing
- » Black anodized CNC billet adapter



OER+ 6.7L INTERCOOLER PIPE UPGRADE*

XD305 // 2011-2016 FORD 6.7L POWERSTROKE

- » Replaces common failure-prone factory part
- » No aftermarket tuning required
- » 3" Mandrel-bent tubing
- » Black anodized CNC billet adapter



OER+ 6.7L DIRECT-FIT INTERCOOLER PIPE*

XD458 // 2011-2016 FORD 6.7L POWERSTROKE

- » Factory-style connector
- » Reinforced silicone couplers
- » Replaces common failure-prone factory part
- » No aftermarket tuning required



STREET PERFORMANCE PUSHRODS*

XD321 // 1994-2003 FORD 7.3L POWERSTROKE

XD320 // 2003-2010 FORD 6.0L/6.4L POWERSTROKE

XD322 // 2011-2019 FORD 6.7L POWERSTROKE

- » Supports 750HP+
- » 4130/4135 chromoly construction
- » Direct replacement



6.7L FUEL INJECTOR SOCKET SET

XD393 // 2011-2022 FORD 6.7L POWERSTROKE

- » 12-Point, 17mm socket
- » Reach fuel injector regardless of angle
- » Eliminates damage to electrical connectors
- » Crowfoot design for easy torquing



INJECTOR BRUSH KIT

XD376 // 2003-2016 FORD 6.0L/6.4L/6.7L POWERSTROKE

- » Cleans injector bore & seat
- » Removes carbon deposits, rust & debris
- » Features ABS plastic handle for long durability
- » Includes 1 spiral brush & 1 bottom brush

COOLANT FILTRATION SYSTEMS

XD249 // 1999.5-2003 FORD 7.3L POWERSTROKE

XD143 // 2003-2007 FORD 6.0L POWERSTROKE

XD177 // 2008-2010 FORD 6.4L POWERSTROKE

XD192 // 2011-2016 FORD 6.7L POWERSTROKE

NEW! XD365 // 2017-2019 FORD 6.7L POWERSTROKE

The XDP Coolant Filtration System removes contaminants such as casting sand, coolant sediment, and other debris, which can greatly increase the life of vital cooling components.

- » Increases cooling system reliability & longevity
- » Anodized & engraved billet aluminum filter base



6.7L BILLET FUEL DRAIN VALVE

XD415 // 2017-2022 FORD 6.7L POWERSTROKE

- » Direct-fit installation
- » Durable anodized finish
- » Billet aluminum construction
- » Quick, simple installation



6.7L OIL COOLER

XD413 // 2011-2019 FORD 6.7L POWERSTROKE

- » Direct replacement
- » 100% new construction
- » Meets OE specs



5R110 MODIFIED CLUTCH SOLENOID*

XD386 // 2003-2010 FORD 6.0L/6.4L POWERSTROKE

- » Increases transmission longevity & performance
- » Provides more fluid at a faster rate for performance builds
- » Built from brand new parts
- » Tested in-house on a Solx 2000 Solenoid Tester



6.4L STOCK 230AMP ALTERNATOR

XD363 // 2008-2010 FORD 6.4L POWERSTROKE

- » Direct stock replacement
- » 230 amp output
- » Pre-tested & ready for installation
- » 1-Year Warranty



6.7L BLACK BATTERY HOLD DOWN

XD418 // 2011-2022 FORD 6.7L POWERSTROKE

- » Black anodized finish
- » Precision CNC-machined
- » Billet aluminum construction
- » Includes (2) tie downs (1 per side)



6.7L POLISHED BATTERY HOLD DOWN

XD419 // 2011-2022 FORD 6.7L POWERSTROKE

- » Polished finish
- » Precision CNC-machined
- » Billet aluminum construction
- » Includes (2) tie downs (1 per side)



6.7L WIF DRAIN PLUG

XD346 // 2011-2016 FORD 6.7L POWERSTROKE

- » Replaces brittle factory plastic plug
- » Aluminum construction
- » New O-rings included
- » Quick, simple installation



6.4L OIL COOLER

XD270 // 2008-2010 FORD 6.4L POWERSTROKE

- » Direct drop-in replacement
- » 100% new construction
- » Increases cooling system reliability
- » 1-Year Warranty



OER+ BILLET ROCKER ARM VALVE BRIDGE SET*

XD382 // 2008-2010 FORD 6.4L POWERSTROKE

- » Sold as a complete set
- » Nitride coating for additional protection
- » Billet 4140 chromoly construction
- » 1-Year Warranty



HEAVY DUTY HIGH BOOST VALVE SPRING SET*

XD388 // 2003-2010 FORD 6.0L/6.4L POWERSTROKE

- » Set of 32 valve springs
- » 100lb seat pressure
- » Performance valve spring kit
- » Essential for elevated boost levels



PARTS & ACCESSORIES FOR FORD TRUCKS



BILLET OIL FILTER CAP

XD265 // 2003-2010 FORD 6.0L/6.4L POWERSTROKE

- » Direct replacement cap
- » Billet aluminum construction
- » Pre-drilled & tapped 1/8" NPT Port
- » 1-Year Warranty

BILLET FUEL FILTER CAP

XD266 // 2003-2007 FORD 6.0L POWERSTROKE

- » Direct replacement cap
- » Billet aluminum construction
- » Pre-drilled & tapped 1/8" NPT Port
- » 1-Year Warranty

6.0L INTERCOOLER HOSE & CLAMP KIT

XD455 // 2003-2007 FORD 6.0L POWERSTROKE

- » Direct-fit replacement
- » Durable silicone construction
- » Constant-tension t-bolt clamps
- » More resistant to heat, pressure, fuel, & oil

6.0L HEAVY DUTY OIL COOLER

XD212 // 2003-2007 FORD 6.0L POWERSTROKE
XD307 // OIL COOLER GASKET SET (INCL. SCREEN)

- » Heavy-duty upgraded design
- » 100% new construction
- » Direct replacement
- » Gasket set sold separately

6.0L OIL COOLER FLUSH KIT

XD397 // 2003-2007 FORD 6.0L POWERSTROKE

- » Flushes debris from oil cooler
- » Oil cooler flush adapter service tool
- » Helps maintain cooling system efficiency
- » Includes adapter, angled brass fitting, & hose hookup

6.0L OER+ UPGRADED UP-PIPE ASSEMBLY*

XD218 // 2003-2007 FORD 6.0L POWERSTROKE

- » Increased reliability
- » Stainless steel construction
- » Heavy-duty bellows for long life
- » Retains use of EGR System

NEW!
PRODUCT



6.0L/6.4L OIL PAN BOLT KIT

XD505 // 2003-2010 FORD 6.0L/6.4L POWERSTROKE

- » Quality tested
- » Direct-fit replacement
- » Black-phosphate coated



6.0L EGR COOLER GASKET KIT

XD265 // 2003-2007 FORD 6.0L POWERSTROKE

- » For EGR Cooler replacement
- » OE quality seals and hardware
- » 1-Year Warranty



OER+ BILLET ROCKER ARM VALVE BRIDGE SET*

XD383 // 2003-2007 FORD 6.0L POWERSTROKE

- » Sold as a complete set
- » Nitride coating for additional protection
- » Billet 4140 chromoly construction
- » 1-Year Warranty



6.0L ALUMINUM RECOVERY TANK

XD375 // 2003-2007 FORD 6.0L POWERSTROKE

- » Built-in sight glass
- » Direct-fit replacement
- » Welded aluminum construction
- » Satin black finish for durability & sleek look



6.0L COOLANT RECOVERY TANK

XD214 // 2003-2007 FORD 6.0L POWERSTROKE
XD215 // RECOVERY TANK CAP (2003-2016)

- » Direct replacement
- » Durable OE Style design
- » Cap sold separately



6.0L WELDLESS COOLANT Y-PIPE

XD284 // 2003-2007 FORD 6.0L POWERSTROKE

- » Eliminates failure-prone factory plastic Y-Pipe
- » Billet "weldless" 1-piece construction
- » Installs under degas bottles



ENGINE OIL PAN

XD371 // 2003-2010 FORD 6.0L/6.4L POWERSTROKE

- » Includes drain plug
- » Direct-fit replacement
- » Black coated for corrosion resistance
- » 1-Year Warranty



6.0L BILLET ADJUSTABLE FUEL PRESSURE REGULATOR HOUSING*

XD369 // 2003-2007 FORD 6.0L POWERSTROKE

- » Allows for precise fuel pressure adjustment
- » Black anodized finish for enhanced appearance
- » CNC-machined billet aluminum construction
- » 1-Year Warranty



6.0L "BLUE SPRING" UPGRADE KIT*

XD272 // 2003-2007 FORD 6.0L POWERSTROKE

- » Increases fuel pressure (around 10 PSI)
- » Easy, bolt-on installation
- » Increases longevity of vital fuel system components
- » Great for stock & modified trucks



6.0L OIL STAND PIPE & RAIL PLUG KIT

XD233 // 2004.5-2007 FORD 6.0L POWERSTROKE

- » Replaces oil rail "dummy" plugs & stand pipes
- » OE style replacement
- » Complete kit



6.0L HIGH PRESSURE OIL RAIL BALL TUBES

XD213 // 2004.5-2007 FORD 6.0L POWERSTROKE
XD226 // BALL TUBE INSTALLATION TOOL (SOLD SEPARATELY)

- » Eliminate oil leaks
- » Replaces worn seals that cause hard/no start conditions
- » No need to replace oil rail



NEW!
PRODUCT

BLACK-PHOSPHATE STARTER BOLT KIT

XD532 // 2003-2010 FORD 6.0L/6.4L POWERSTROKE

- » Direct-fit replacement
- » Durable black-phosphate coating
- » Meets OEM specifications



PARTS & ACCESSORIES FOR FORD TRUCKS



6.0L STOCK 230AMP ALTERNATOR
XD362 // 2003-2007 FORD 6.0L POWERSTROKE

- » Direct stock replacement
- » 230 amp output
- » Pre-tested & ready for installation
- » 1-Year Warranty



6.0L X-TRA COOL WATER PUMP
XD416 // 2004.5-2007 FORD 6.0L POWERSTROKE

- » Direct-fit replacement
- » 100mm metal impeller
- » Replaces factory plastic impeller
- » 1-Year Warranty



X-TRA COOL RADIATOR CLUTCH FAN BLADE
XD373 // 2003-2007 FORD 6.0L POWERSTROKE

- » Direct-fit replacement
- » Steel center hub
- » High-quality construction
- » 1-Year Warranty



6.0L TURBO OIL DRAIN TUBE
XD268 // 2003-2007 FORD 6.0L POWERSTROKE

- » Updated design over the factory tube
- » Mandrel-bent for better return flow
- » Meets OE specifications



6.0L STC HPOP FITTING UPDATE
XD269 // 2004.5-2007 FORD 6.0L POWERSTROKE

- » Replaces leaky factory 2-piece fitting
- » 1-Year Warranty



6.0L TURBO BOLT & O-RING KIT
XD329 // 2003-2007 FORD 6.0L POWERSTROKE

- » High quality seals & hardware
- » Includes exhaust up-pipe gasket
- » 1-Year Warranty



6.0L GLOW PLUG HARNESS TOOL
XD262 // 2003-2007 FORD 6.0L POWERSTROKE

- » Removes glow plug harness connectors
- » Eliminates damage to factory harness
- » 1-Year Warranty



6.0L HFCM WATER SEPARATOR PLUG
XD327 // 2003-2007 FORD 6.0L POWERSTROKE

- » Built-in retaining shaft
- » Replaces easily damaged factory plug
- » Knurled for hand removal & installation
- » Machined for a 3/8" drive ratchet



6.0L BANJO BOLT UPGRADE
XD271 // 2003-2007 FORD 6.0L POWERSTROKE

- » Eliminates fuel restriction of factory bolts
- » Free-flowing banjo bolts
- » 4 Holes per bolt
- » Bolt-on installation



7.3L STOCK 230AMP ALTERNATOR
XD361 // 1994-2003 FORD 7.3L POWERSTROKE

- » Direct stock replacement
- » 230 amp output
- » Pre-tested & ready for installation
- » 1-Year Warranty



7.3L INTERCOOLER HOSE & CLAMP KIT
XD456 // 1999.5-2003 FORD 7.3L POWERSTROKE

- » Direct-fit replacement
- » Durable silicone construction
- » Constant-tension t-bolt clamps
- » More resistant to heat, pressure, fuel, & oil



7.3L OER+ BELLOWED UP-PIPE KIT*
XD178 // 1999.5-2003 FORD 7.3L POWERSTROKE

- » Replaces failure-prone factory up-pipes
- » Bellowed design for expansion/contraction
- » Bolt-on replacement
- » Eliminates factory "donut" gasket



6.0L INJECTOR PRESSURE REGULATOR (IPR) SOCKET
XD261 // 2003-2007 FORD 6.0L POWERSTROKE

- » Slotted for easy removal of IPR
- » 3/8" Drive
- » 1-Year Warranty



6.0L G2.8 INJECTOR CONNECTOR REMOVAL TOOL
XD263 // 2003-2007 FORD 6.0L POWERSTROKE

- » Removes electrical injector connectors
- » Eliminates damage due to improper tools
- » 1-Year Warranty



6.0L QUICK RELEASE COUPLER TOOL
XD367 // 2003-2007 FORD 6.0L POWERSTROKE

- » Easily remove oil & fuel line connections
- » Durable steel construction
- » Powder coated black for corrosion resistance
- » Eliminates damage from improper tools



7.3L OIL COOLER
XD267 // 1994-2003 FORD 7.3L POWERSTROKE

- » Replaces failure-prone factory oil cooler
- » Direct bolt-in replacement
- » 1-Year Warranty



7.3L BILLET THERMOSTAT HOUSING
XD277 // 1999.5-2003 FORD 7.3L POWERSTROKE

- » Billet aluminum
- » Direct replacement
- » Includes stainless steel hardware
- » Anodized black for corrosion resistance



7.3L INJECTOR SLEEVE
XD412 // 1994-2003 FORD 7.3L POWERSTROKE

- » Sold individually
- » Direct replacement
- » Meets OE specs
- » 1-Year Warranty



3/8" STREET PUSHRODS*

XD314 // 1989-1998 DODGE 5.9L DIESEL
XD204 // 1998.5-2018 DODGE 5.9L/6.7L DIESEL
XD399 // 2019-2022 RAM 6.7L DIESEL

- » Supports 500HP+
- » 4130/4135 chromoly construction



7/16" COMPETITION PUSHRODS*

XD205 // 1988.5-2018 DODGE 5.9L/6.7L DIESEL

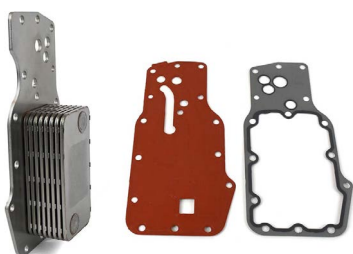
- » Supports 750HP+
- » 4130/4135 chromoly construction
- » Perfect for stock to extreme builds



TRANSMISSION COOLER THERMAL BYPASS VALVE (TBV) UPGRADE

XD343 // 2013-2018 DODGE RAM (68RFE & AS69RC)

- » Direct replacement for failure-prone factory valve
- » Eliminates hot fluid recirculation
- » Reduced transmission temperatures
- » No modification needed for installation



ENGINE OIL COOLER

XD417 // 2007.5-2022 DODGE 6.7L DIESEL

- » Quality tested
- » Direct-fit replacement
- » Meets OE specifications
- » 1-Year Warranty



MECHANICAL FUEL PUMP BLOCK-OFF PLATE*

XD469 // 1989-2002 DODGE 5.9L DIESEL

- » Simple installation
- » Precision CNC-machined
- » Billet aluminum construction
- » Black anodized finish for durability



ROCKER ARM TRUNNION SET*

XD319 // 1998.5-2022 DODGE 5.9L/6.7L

- » CNC-machined
- » Larger oil supply holes
- » Increased oil groove width
- » HD billet tool steel construction



REMAN. STOCK VP44 INJECTION PUMPS

XD1PVR15X // 1998.5-2002 5.9L DIESEL AUTO 6 5-SPEED (STANDARD OUTPUT 235HP)
XD1PVR17X // 2000-2002 5.9L DIESEL 6-SPEED (HIGH OUTPUT 245HP)

- » Built with only genuine Bosch components
- » Comes pre-tested and ready for installation
- » Stock replacement
- » 1-Year Warranty



X-TRA DEEP TRANSMISSION PAN

XD490 // 1989-2007 DODGE 5.9L DIESEL

- » Equipped with 727 / 518 / 47RE / 47RH / 48RE
- » 1/8" NPT temperature port
- » 4 quarts added capacity over stock
- » Fabricated aluminum construction



X-TRA DEEP TRANSMISSION PAN

XD452 // 2007.5-2022 DODGE 6.7L DIESEL

- » Equipped with 68RFE
- » 1/8" NPT temperature port
- » 2 quarts added capacity over stock
- » Fabricated aluminum construction



5.9L INTERCOOLER HOSE & CLAMP KIT

XD457 // 1994-2002 DODGE 5.9L DIESEL

- » Direct-fit replacement
- » Durable silicone construction
- » Constant-tension t-bolt clamps
- » More resistant to heat, pressure, fuel, & oil



OER+ BILLET ROCKER ARM BRIDGE SET*

XD318 // 1998.5-2022 DODGE 5.9L/6.7L DIESEL

- » Increased strength
- » Billet 4140 chromoly construction
- » Long lasting durability for performance engines
- » Sold as a complete set



12V SPRING COMPRESSOR TOOL

XD312 // 1989-1998 DODGE 5.9L DIESEL

- » Billet aluminum construction
- » Valve spring compressor
- » Low-profile design
- » 1-Year Warranty



CAT FILTER ADAPTER

XD232 // 2004.5-2007 DODGE 5.9L DIESEL

- » Replaces factory fuel filter with 2-micron CAT Filter
- » XDP billet aluminum adapter
- » Works with factory fuel filter lines

NOTE: Not for trucks with factory lift pump mounted to filter housing



6.7L CAT FILTER ADAPTER

XD381 // 2007.5-2009 DODGE 6.7L DIESEL

- » Increased filtration
- » Billet aluminum construction
- » CAT 1R-0750 high efficiency fuel filter



6.7L CAT FILTER ADAPTER

XD381 // 2010-2018 RAM 6.7L DIESEL

- » Increased filtration
- » Billet aluminum construction
- » CAT 1R-0750 high efficiency fuel filter



PERFORMANCE VALVE SPRINGS KIT*

XD389 // 1989-1998 DODGE 5.9L DIESEL

- » Conical spring design
- » Performance valve spring kit
- » Essential for elevated boost levels
- » Complete set (Springs, Locks, & Retainers)



PERFORMANCE VALVE SPRINGS KIT*

XD313 // 1998.5-2022 DODGE 5.9L/6.7L DIESEL
XD311 // 24V SPRING COMPRESSOR TOOL (SOLD SEPARATELY)

- » Conical spring design (Supports up to 2,000HP)
- » Essential for elevated boost levels
- » Complete set (Springs, Locks, & Retainers)



HEAVY DUTY VALVE SPRING SET*

XD390 // 1998.5-2022 DODGE RAM 5.9L/6.7L DIESEL

- » Performance valve spring kit
- » Essential for elevated boost levels (+50 lbs)
- » Helps eliminate valve float during high boost
- » 1-Year Warranty



NEW!
PRODUCT

68RFE BILLET FILTER CLAMP
XD478 // 2007.5-2018 DODGE RAM 6.7L DIESEL

- » Holds filter firmly in place
- » CNC-Machined billet aluminum
- » Works with 68RFE Deep Transmission Pans
- » Includes hardware



NEW!
PRODUCT

EXHAUST MANIFOLD STUD KIT
XD530 // 1994-2018 DODGE RAM 5.9L/6.7L DIESEL

- » Black oxide coated
- » Higher clamping force
- » Allen head for easy thread-in installation
- » Includes (12) Studs, (12) Washers & (12) 12-Point Nuts



NEW!
PRODUCT

EXHAUST MANIFOLD GASKET SET
XD531 // 1998.5-2018 DODGE RAM 5.9L/6.7L DIESEL

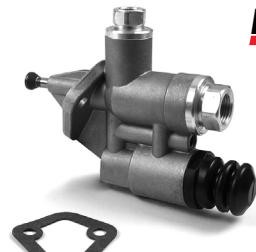
- » Set of 6
- » OE-style direct replacement
- » Multi-layered steel (MLS) Construction
- » Resists blowouts & burnouts from high-temperatures



EXHAUST MANIFOLD BOLT KIT
XD230 // 1989-2018 DODGE 5.9L/6.7L DIESEL

- » Replaces old corroded manifold bolts
- » Intended for aftermarket exhaust manifolds

NOTE: Will not fit stock manifold or with stock spacers



NEW!
PRODUCT

OER SERIES FUEL TRANSFER PUMP
XD519 // 1994-1998 DODGE 5.9L DIESEL

- » Direct-fit replacement
- » Includes mounting gasket
- » Meets factory specifications



PISTON OIL SQUIRTERS
XD341 // 1989-2002 DODGE 5.9L DIESEL

- » Replaces plastic factory oil squirters
- » 7075 aluminum construction
- » Larger orifice for increased oil volume
- » 1-Year Warranty



BILLET ALUMINUM FUEL FILL CAP
XD197 // 2013-2018 DODGE 6.7L DIESEL
// 2014-2018 RAM 1500 3.0L ECO-DIESEL

- » Simple solution to missing cap from factory
- » Dual O-ring seal to keep out contaminants
- » Pre-installed magnet
- » Anodized green finish engraved with XDP logo



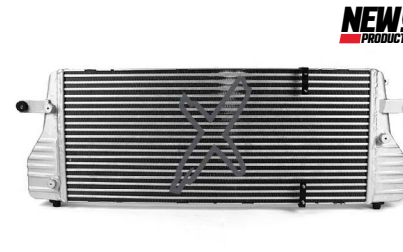
BOLT-ON SIDE FREEZE PLUG
XD334 // 1989-2018 DODGE 5.9L/6.7L DIESEL

- » Bolt-on design
- » O-ring gasket seal
- » Eliminates risk of blown freeze plugs
- » CNC-machined 6061 aluminum construction



BILLET OIL CAP
XD248 // 1998.5-2018 DODGE RAM 5.9L/6.7L DIESEL

- » Thread-in cap
- » Black anodized finish
- » Increases underhood aesthetics
- » Billet aluminum construction



NEW!
PRODUCT

XTRA COOL DIRECT-FIT OER INTERCOOLER*
XD479 // 1994-2002 DODGE 5.9L DIESEL

- » OEM quality
- » Direct-fit replacement
- » Tested for fitment & reliability
- » 1-Year Warranty



DUAL RADIATOR COOLANT Y-PIPE
XD276 // 2013-2015 DODGE 6.7L DIESEL (WELDED)
XD283 // 2013-2015 DODGE 6.7L DIESEL (1-PIECE)

- » Replaces weak plastic factory Y-pipe
- » Fits upper & lower connection
- » Durable aluminum construction



P7100 SHUTOFF SOLENOID
XD330 // 1994-1998 DODGE 5.9L DIESEL

- » Replaces factory solenoid
- » Restores proper shut-down / start-up
- » Includes bracket, solenoid, & hardware



BOLT-ON REAR FREEZE PLUG
XD338 // 1989-2002 DODGE 5.9L DIESEL

- » Bolt-on design
- » O-ring seal
- » Eliminates risk of blown freeze plugs
- » CNC-machined 6061 aluminum construction



BOLT-ON REAR FREEZE PLUG
XD339 // 2003-2018 DODGE 5.9L/6.7L DIESEL

- » Bolt-on design
- » O-ring seal
- » Eliminates risk of blown freeze plugs
- » CNC-machined 6061 aluminum construction



WATER IN FILTER (WIF) WRENCH
XD247 // 2013-2018 DODGE 6.7L DIESEL

- » Precision machined to fit factory WIF Sensor
- » High quality T-6061 aluminum
- » Black anodized finish



INJECTION PUMP GEAR PULLER
XD134 // DIESEL VE, P7100, VP44 & CP3 PUMPS

- » Removes pump gear from injection pump
- » Step is an additional .075" deeper



NEW!
PRODUCT

BLACK-PHOSPHATE STARTER BOLT KIT
XD534 // 2007.5-2022 DODGE RAM 6.7L DIESEL

- » Direct-fit replacement
- » Durable black-phosphate coating
- » Meets factory specifications



NEW!
PRODUCT

BLACK-PHOSPHATE STARTER BOLT KIT
XD535 // 1994-2007 DODGE 5.9L DIESEL

- » Direct-fit replacement
- » Durable black-phosphate coating
- » Meets factory specifications



PARTS & ACCESSORIES FOR CHEVY/GMC TRUCKS



X-TRA COOL TRANSMISSION OIL COOLER

XD309 // 2001-2005 GM 6.6L DURAMAX LBZ/LLY

- » Direct-fit replacement for factory cooler
- » High-efficiency core for max cooling potential
- » Comes with all necessary hardware
- » Upgraded design for increased durability



X-TRA COOL TRANSMISSION OIL COOLER

XD310 // 2006-2010 GM 6.6L DURAMAX LBZ/LML

- » Direct-fit replacement for factory cooler
- » High-efficiency core for max cooling potential
- » Comes with all necessary hardware
- » Upgraded design for increased durability



FUEL FILTER DELETE

XD163 // 2001-2016 GM 6.6L DURAMAX

- » Replaces factory filter when using aftermarket fuel system
- » Built-in 1/8" NPT Port
- » Retains WIF Sensor
- » Billet aluminum construction



3/8" STREET PUSHRODS*

XD315 // 2001-2016 GM 6.6L DURAMAX

NEW! XD387 // 2017-2020 GM 6.6L DURAMAX L5P

- » Supports 750HP+
- » 4130/4135 chromoly construction
- » Perfect for stock to extreme builds



7/16" COMPETITION PUSHRODS*

XD316 // 2001-2016 GM 6.6L DURAMAX

- » Supports 1000HP+
- » 4130/4135 chromoly construction



OER+ BILLET ROCKER ARM VALVE BRIDGE SET*

XD384 // 2001-2016 GM 6.6L DURAMAX

- » Nitride Coating
- » Sold as a complete set (16)
- » Billet 4140 chromoly construction
- » Designed for stock rocker arms only

DURAMAX CAT ADAPTER

XD171 // 2001-2016 GM 6.6L DURAMAX

XD228 // CAT FILTER ADAPTER REPLACEMENT O-RING

XD325 // CAT FILTER ADAPTER WRENCH (SOLD SEPARATELY)

The XDP Duramax CAT Adapter with 1R-0750 Filter, Bleeder Screw & Spacer is an easy way to upgrade the fuel filter on your GM 6.6L Duramax. The durable anodized filter adapter simply threads onto the OEM Filter Head and allows you to run the more efficient and less expensive CAT Filter on your truck.

- » Anodized filter adapter with O-rings
- » CAT 1R-0750 filter
- » Aluminum bleeder screw
- » Fuel filter head spacer



BILLET TURBO RESONATOR DELETE PLUG*

XD184 // 2004.5-2010 GM 6.6L DURAMAX

- » Removes factory turbo resonator
- » CNC-machined billet aluminum
- » Built-in O-ring seal
- » Anodized black finish



TURBO RESONATOR DELETE PLATE*

XD239 // 2011-2016 GM 6.6L DURAMAX LML

- » Removes turbo resonator
- » Easy, bolt-on installation
- » Billet aluminum construction
- » Anodized black finish



BILLET COOLANT BLOCK-OFF PLATE

XD344 // 2001-2022 GM 6.6L DURAMAX

- » Eliminates rear housing coolant leaks
- » Built-in O-ring seal
- » Billet aluminum construction
- » Black anodized finish



EPC SOLENOID FOOLER PLUG*

XD345 // 2011-2019 GM 6.6L DURAMAX LML/L5P

- » Enhances transmission performance / longevity
- » Increased line pressure
- » Easy installation
- » Does not require removal of valve body or transmission



PERFORMANCE VALVE SPRINGS KIT*

XD386 // 2001-2016 GM 6.6L DURAMAX

- » 125lb seat pressure
- » Conical spring design
- » Essential for elevated boost levels
- » Complete set (Springs, Locks & Retainers)



ROCKER ARM SHAFTS*

XD385 // 2001-2016 GM 6.6L DURAMAX

- » CNC-machined
- ».250" wall thickness
- » 4130 chromoly steel construction
- » 1-Year Warranty



DURAMAX CRANKSHAFT PIN KIT

XD331 // 2001-2016 GM 6.6L DURAMAX

- » Eliminates factory dowel pin failures
- » Specially made jig to drill crankshaft
- » No engine tear down required



STEEL ALLOY DOWEL PIN

XD508 // 2001-2016 GM 6.6L DURAMAX

- » Crankshaft dowel pin
- » High-quality steel alloy
- » For use with XDP Duramax Crankshaft Pin Kit XD331



LONG-LIFE COBALT STEEL DRILL BIT

XD509 // 2001-2016 GM 6.6L DURAMAX

- » Replacement drill bit
- » Long-life cobalt steel construction
- » For use with XDP Duramax Crankshaft Pin Kit XD331



PARTS & ACCESSORIES FOR CHEVY/GMC TRUCKS



HIGH OUTPUT 220 AMP ALTERNATOR XD224 // 2001-2007 GM 6.6L DURAMAX

- » 220 amp output
- » Bolt-on upgrade
- » 100% brand new, no core charge
- » 1-Year Warranty



X-TRA COOL RADIATOR CLUTCH FAN BLADE XD374 // 2001-2005 GM 6.6L DURAMAX LB7/LY 2006-2008 GM 6.6L DURAMAX EXPRESS/SAVANA VANS

- » Steel center hub
- » Direct-fit replacement
- » High-quality construction



FUEL LINE RETURN BANJO BOLT KIT XD476 // 2001-2004 GM 6.6L DURAMAX LB7

- » Quality tested
- » Direct-fit replacement
- » Replaces damaged factory bolts
- » Meets OE specs



DURAMAX RADIATOR DRAIN PIPE XD328 // 2006-2019 GM 6.6L DURAMAX

- » Allows easy, controllable draining of cooling system
- » Simply splices into existing hose
- » CNC-machined billet aluminum
- » Black anodized finish



HOT
ITEM



STOCK "PINCHED" DESIGN



XDP "HIGH FLOW" DESIGN

OER SERIES DRIVER SIDE HIGH-FLOW EXHAUST MANIFOLD* XD342 // 2001-2016 GM 6.6L DURAMAX

Replace your underperforming factory exhaust manifold with the XDP Driver Side High-Flow Exhaust Manifold. The XD342 has an unrestricted high-flow design that eliminates the "dented" or "kinked" driver side exhaust manifold that comes factory equipped on the 2001-2010 GM 6.6L Duramax powered trucks. On the 2011-2016 LML models this manifold is a direct-replacement for the LML trucks as they already come with the high-flow style exhaust manifold.

- » Direct replacement
- » Eliminates "kinked" manifold on 2001-2010 models
- » Factory replacement on 2011-2016 models
- » 1-Year Warranty



X-TRA COOL L5P TRANSMISSION COOLER THERMOSTATIC BYPASS XD396 // 2017-2019 GM 6.6L DURAMAX L5P

- » Direct-fit replacement, no cutting of factory lines
- » Helps improve transmission life
- » Eliminates hot fluid recirculation
- » Lowers transmission temps up to 50 degrees



LB7 INJECTOR CUP & O-RING SET XD410 // 2001-2004 GM 6.6L DURAMAX LB7

- » Direct-fit replacement
- » Stainless steel construction
- » Kit includes 8 injector cups & 16 O-rings



BILLET ALUMINUM OIL CAP XD477 // 2001-2016 GM 6.6L DURAMAX

- » OE-Style construction
- » Gaskets included
- » Direct-fit replacement
- » 1-Year Warranty



NEW!
PRODUCT

OER SERIES FUEL RETURN LINE ASSEMBLY XD607 // 2011-2016 GM 6.6L DURAMAX LML/LGH

- » Direct-fit replacement
- » Services both banks
- » Includes regulated return valve
- » 1-Year Warranty



WIF SENSOR DELETE PLUG XD137 // 2001-2016 GM 6.6L DURAMAX

- » Installs in place of factory WIF Sensor
- » 3/8" Ratchet drive for easy installation
- » T6 Billet aluminum
- » Removal does not cause warning light



WATER IN FILTER (WIF) WRENCH XD128 // 2001-2011 GM 6.6L DURAMAX // FOR XD137 WIF SENSOR DELETE PLUG

- » Precision machined for WIF Sensor
- » High quality T-6061 aluminum
- » Opposite end slotted for bleeder screw



WATER IN FILTER (WIF) WRENCH XD247 // 2012-2016 GM 6.6L DURAMAX LML

- » Precision machined for WIF Sensor
- » High quality T-6061 aluminum
- » Opposite end slotted for bleeder screw



FUEL FILTER HEAD SPACER XD138 // 2001-2016 GM 6.6L DURAMAX

- » Additional 3/8" clearance for easy filter replacement
- » No fuel lines/wires need to be extended
- » Made from solid piece of aluminum



ALUMINUM AIR BLEEDER SCREW XD129 // 2001-2016 GM 6.6L DURAMAX

- » T6 Billet aluminum
- » OE-quality Viton® O-ring
- » Machined air channel on threads to bleed air
- » Slotted to work with aftermarket WIF wrenches



NEW!
PRODUCT

BLACK-PHOSPHATE STARTER BOLT KIT XD533 // 2001-2022 GM 6.6L DURAMAX

- » Direct-fit replacement
- » Durable black-phosphate coating
- » Meets factory specifications



XDP X-FACTOR OIL ADDITIVE

XD275 // ONE BOTTLE TREATS 5 QUARTS

X-Factor is a 100% synthetic friction reducer that is engineered to decrease engine wear, reduce noise and vibration, and improve engine efficiency.

- » For all Diesel & Gasoline engines
- » Use with synthetic or conventional oils
- » Protects & cleans internal engine surfaces
- » Restores lost power & compression
- » Restores “failing” HEUI Injectors



XDP DIESEL POWER PLUS™

XD0P116 // ONE BOTTLE TREATS 500 GALLONS

XDP Diesel Power Plus™ is a special formula which is compatible with all grades of diesel fuel and is designed for year round use.

- » Totally disperses water
- » Cleans fuel injection system
- » Prevents formation of algae & bacteria
- » Improves fuel economy
- » 5% Cetane increase
- » For use with ALL Diesel Engines



XDP POLAR-D™

XD0D216 // ONE BOTTLE TREATS 125 GALLONS

XDP Polar-D™ is a cold weather treatment that allows the use of number two diesel fuel year round. It prevents fuel problems related to winter operations, such as gelling & freeze up.

- » Increases cetane number
- » Absorbs free & emulsified water
- » Cleans & lubricates injection system
- » Exceeds B.O.C.L.E. standards
- » For use with ALL Diesel Engines



XDP X-TRA COOL COOLANT ADDITIVE

XD0332 // ONE BOTTLE TREATS 16 QUARTS

X-TRA Cool Coolant Additive has been specially formulated to reduce the operating temperatures of your engine. The premium additives prevent build-up and corrosion to extend the life of your cooling system.

- » For all cooling systems
- » Reduces engine temperatures
- » Prevents build-up & corrosion
- » Compatible with all coolant types
- » No mixing required

UNIVERSAL



ONE HOLE FUEL TANK SUMP
XD182 // UNIVERSAL (CUTTING REQUIRED)

- » Built-in drain plug
- » No tank drop installation
- » Large opening for unrestricted fuel flow
- » Made from aircraft grade T6 billet aluminum



1-1/2" MECHANICAL PRESSURE GAUGE
XD414 // UNIVERSAL - 0-100 PSI (FUEL, AIR & OIL)

- » 0-100 PSI
- » 1/8" NPT male fitting
- » 1-1/2" diameter gauge
- » Liquid filled for extended life



X-TRA COOL TRANSMISSION OIL COOLER
XD398 // UNIVERSAL - MANY APPLICATIONS

- » Supports 30,000+ GWV
- » -10 JIC male connection
- » 15.75" wide x 12.75" tall
- » 10" electric fan (800cfm)
- » Tanks allow up to 5/8" hose
- » High efficiency micro extruded technology



PUSH LOCK FUEL PRESSURE TEE
XD200 // UNIVERSAL - 1/2" PUSH-LOCK FITTING

- » 1/2" Push-lock fitting
- » 1/8" NPT threads
- » Machined from aluminum
- » 1-Year Warranty



FUEL TANK SUMP WITH FUEL RETURN
XD243 // UNIVERSAL (CUTTING REQUIRED)

- » Built-in fuel return
- » No tank drop installation
- » Stand pipe separates return fuel from feed
- » Made from aircraft grade T6 billet aluminum



© Copyright XDP Xtreme Diesel Performance 2023. All rights reserved. Xtreme Diesel Performance and the XDP logo are trademarks of Xtreme Diesel Performance, LLC.

Manufacturer names and logos may be trademarks owned by the respective companies and are used in our images and text solely for identification purposes. It is neither inferred nor implied that any item sold by XDP is a product sponsored, authorized, or approved by, or in any way affiliated or associated with, any manufacturer displayed in this catalog. All rights reserved.